

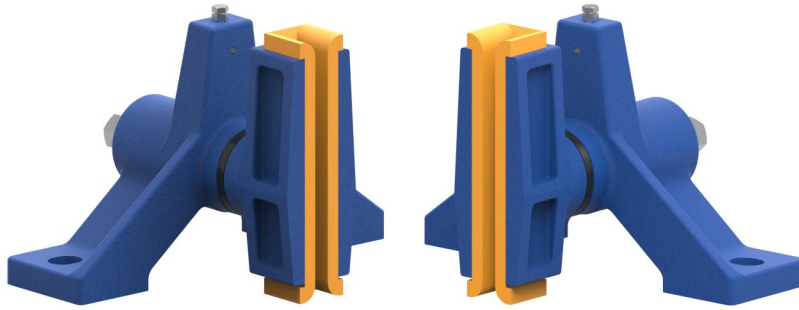
The **Quality** Inspires Trust

Guide Shoe



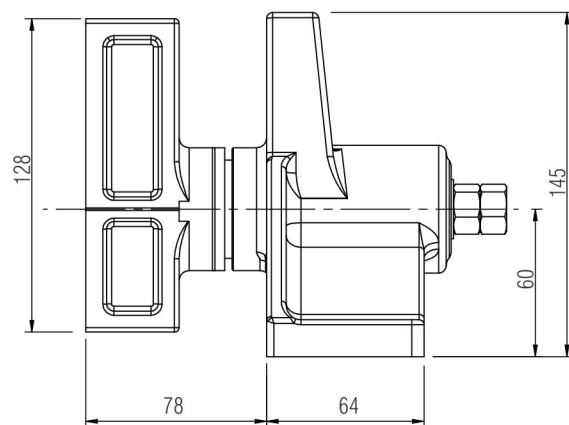
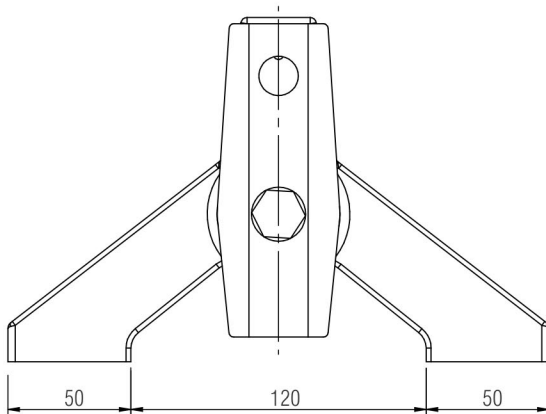
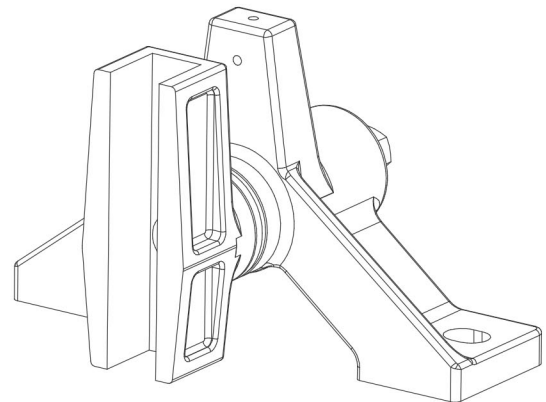
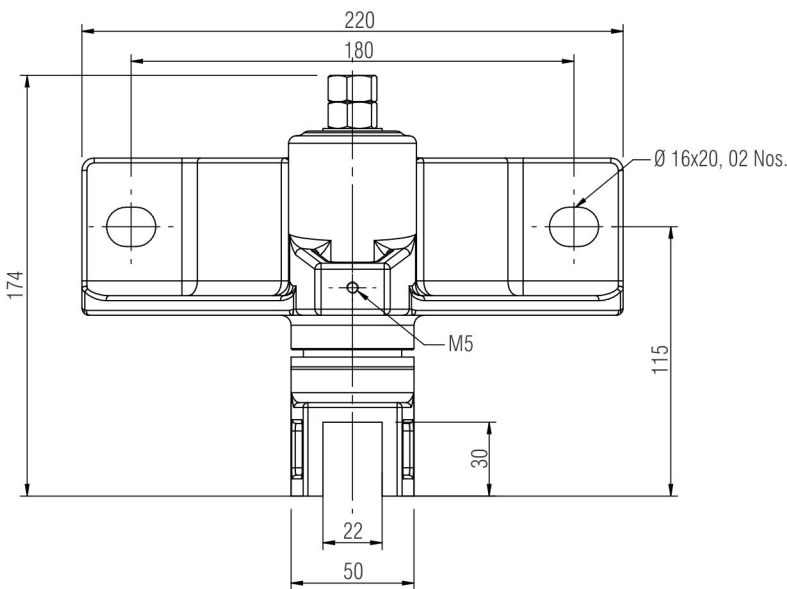
www.sharpengineers.com

Guide Shoe



Guide Shoe T-300

- Load : 1000 daN
- Guide Rail : 6 to 12 mm
- Material : Cast Iron
- Adjustment : Pre-load Nut and Fixing Slots
- Maintenance : Lubricate According to Lift Instructions



All dimensions are in mm.