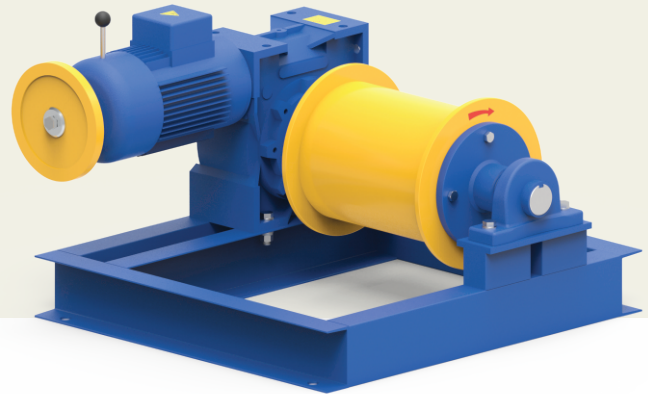







CAULDRON SERIES

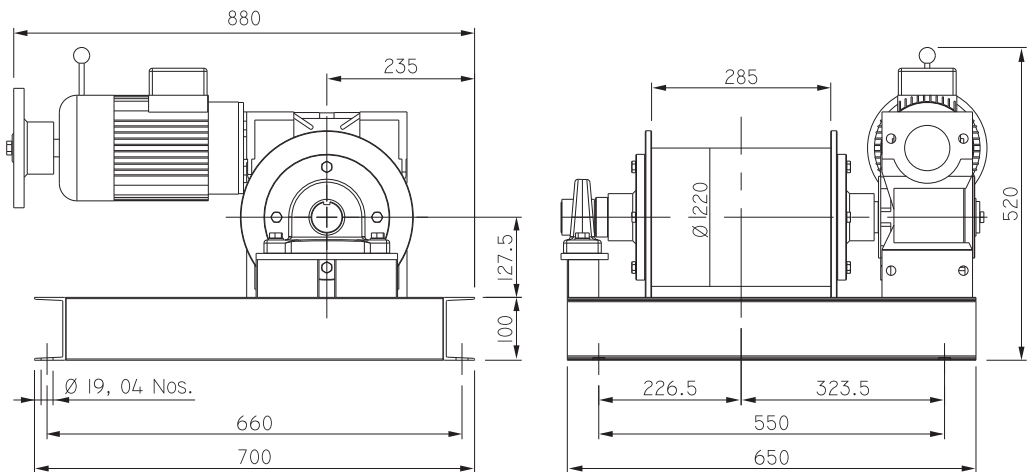
Geared Traction Machine

Dumbwaiter HEN-06 Drum Type



-  **Static Load (Kg)**
700
-  **Gear Ratio**
1/50
-  **Oil Capacity (Ltr)**
1.0
-  **Brake Voltage (DC)**
190V
-  **Weight of Machine (Kg)**
140*

* Weight of machine is varies according to selection of sheave, Motor & Drive system.



Geared Traction Machine

Listed loads don't include the rope's weight. In order to know the net loads capacity, subtract rope's weight from the listed loads.

Position of the gearbox Up
Counter weight 50%
Plant efficiency 0.80

Machine	Duty Load		Roping	Async. Speed (m/sec)	Ratio	Motor Detail		RPM (Async.)	Rated Current (A)	Sheave Specification Sheave Dia X Rope Dia. X No. of Groove
	Person	(Kg)				(Kw)	(HP)			
HEN - 06	250		1:1	0.33	1/50	2.2	3.0	1400	5.1	Ø 220 X 10mm

Kindly contact us for various speed and load combination