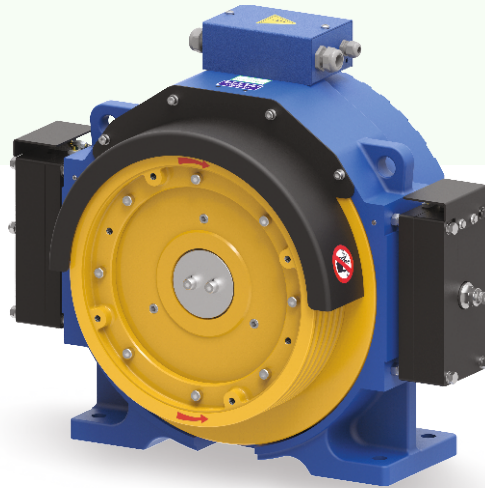


# SEW SERIES

Gearless Traction Machine



**Voltage**  
400 V



**Suspension**  
2:1



**Brake**  
110 VDC



**Max. Static Load**  
3200 Kg



**Weight of Machine (kg)**  
410\*

\* Weight of machine is varies according to selection of sheave, Motor & Drive system.



# Gearless Traction Machine

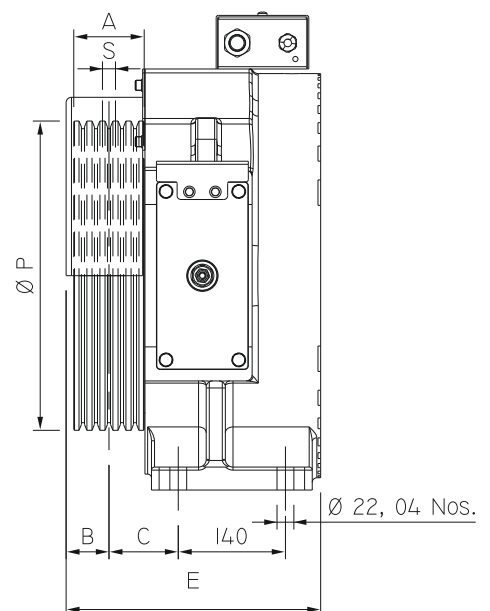
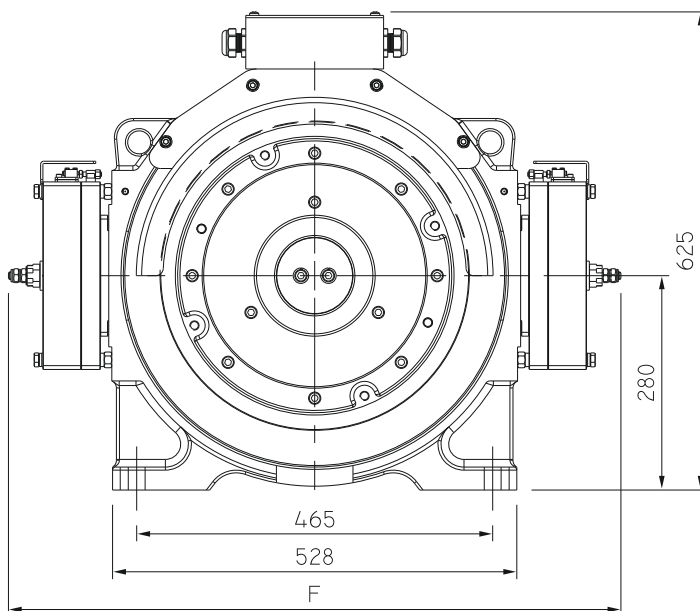


Specification	Load (kg)	Lift Speed (m/s)	Height (m)	Sheave Dia (mm)	No. of Groove X Rope Dia	Current (A)	Toque (Nm)	Rated Speed (rpm)	Frequency (Hz)	Power (kW)	Pole	Rating	INS Class.	IP Code
SEW20-10P1A00	680	1.00	≤ 80	Ø400	4 X Ø10	13.2	460	96	25.5	4.7	32	S5 (40%)	F-Class	IP-40
SEW20-10P1A50		1.50			4 X Ø10	16.5	460	144	38.4	7.0				
SEW20-10P2A00		2.00			5 X Ø10	20.5	460	191	51.0	9.3				
SEW20-13P1A00	884	1.00	≤ 80	Ø400	5 X Ø10	15.0	590	96	25.5	6.0	32	S5 (40%)	F-Class	IP-40
SEW20-13P1A50		1.50			5 X Ø10	19.0	590	144	38.4	9.0				
SEW20-13P2A00		2.00			6 X Ø10	23.5	590	191	51.0	12.0				
SEW20-16P1A00	1088	1.00	≤ 80	Ø400	6 X Ø10	17.8	730	96	25.5	7.3	32	S5 (40%)	F-Class	IP-40
SEW20-16P1A50		1.50			6 X Ø10	24.2	730	144	38.4	11.0				
SEW20-16P2A00		2.00			7 X Ø10	29.5	730	191	51.0	14.6				
SEW20-18P1A00	1224	1.00	≤ 80	Ø340	8 X Ø8	21.5	730	112	30.0	8.4	32	S5 (40%)	F-Class	IP-40
SEW20-18P1A50		1.50			8 X Ø8	28.5	730	169	45.0	12.6				

Kindly contact us for various speed and load combination

ØP	A	B	C	N X ØD	E	F	S
Ø340	112	68	100.5	8 X Ø8	355	800	12

ØP	A	B	C	N X ØD	E	F	S
Ø400	92	56	90.5	4 / 5 X Ø10	335	800	16
	120	77	99.5	7 X Ø10	365		



(All dimensions are in mm)