

DRUM TYPE GEARED

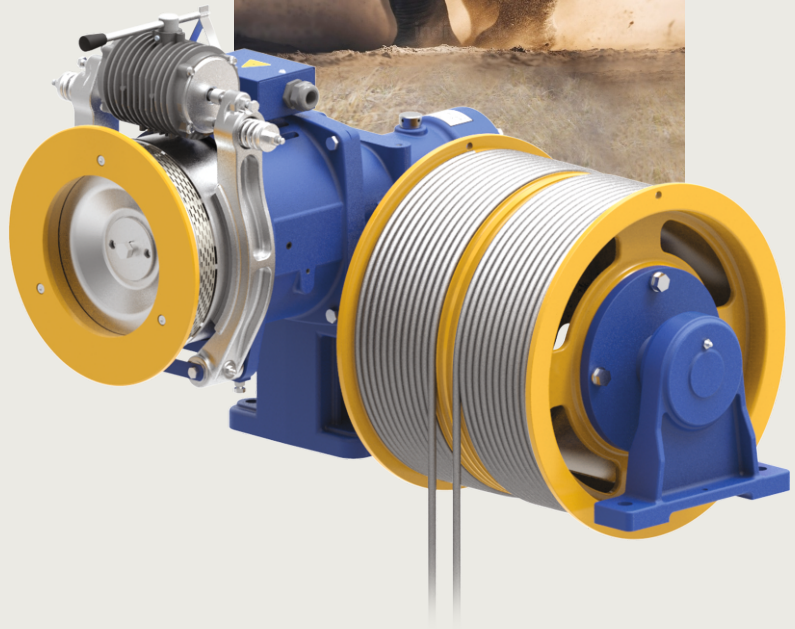
Traction
Machine

For Goods Lift

STRONG



The **Quality** Inspires Trust



SHARPTM
ENGINEERS



TECHNOLOGIES INNOVATION IS CENTRAL AT HOME SHARP ENGINEERS

Our world-class products improve performance and productivity. We have the global manufacturing capability and technical centers of excellence, each dedicated to developing and rigorously testing new high-performance products to meet precise industry and application needs.

We are continuously adapting new technology to innovate our new product development.

Because of this, we are able to help our customers to solve the world's greatest engineering challenges reliably, safety and efficiently.





30
Years
Journey to
Excellence

More than
35,000
Units
Annual Production
Capacity



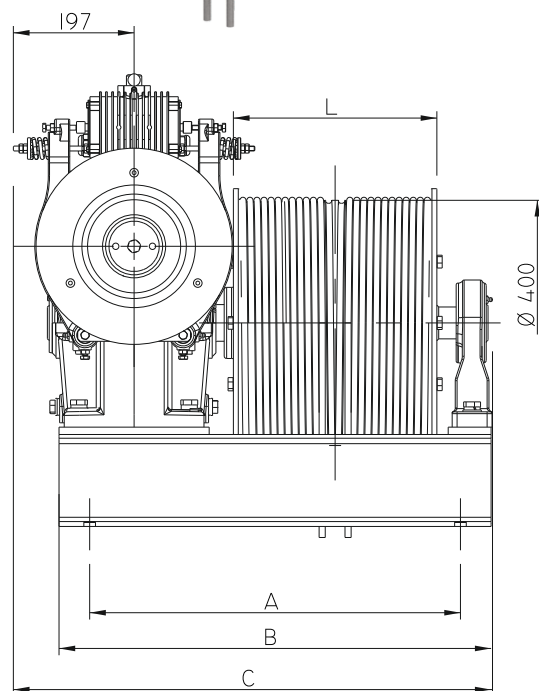
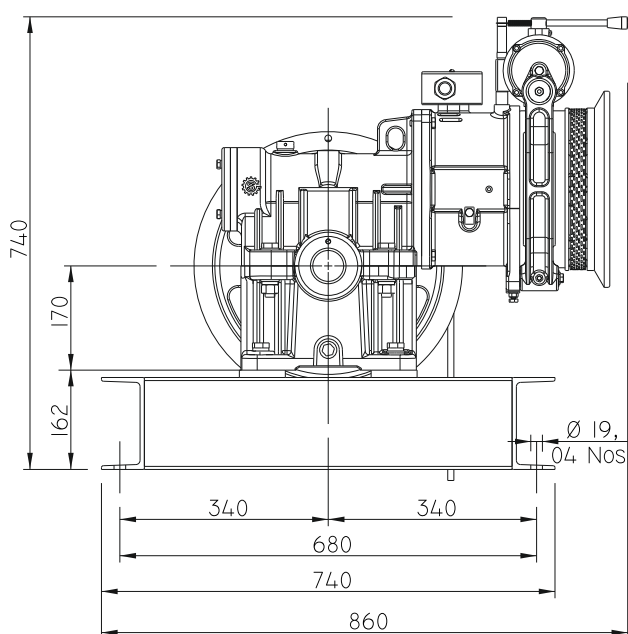
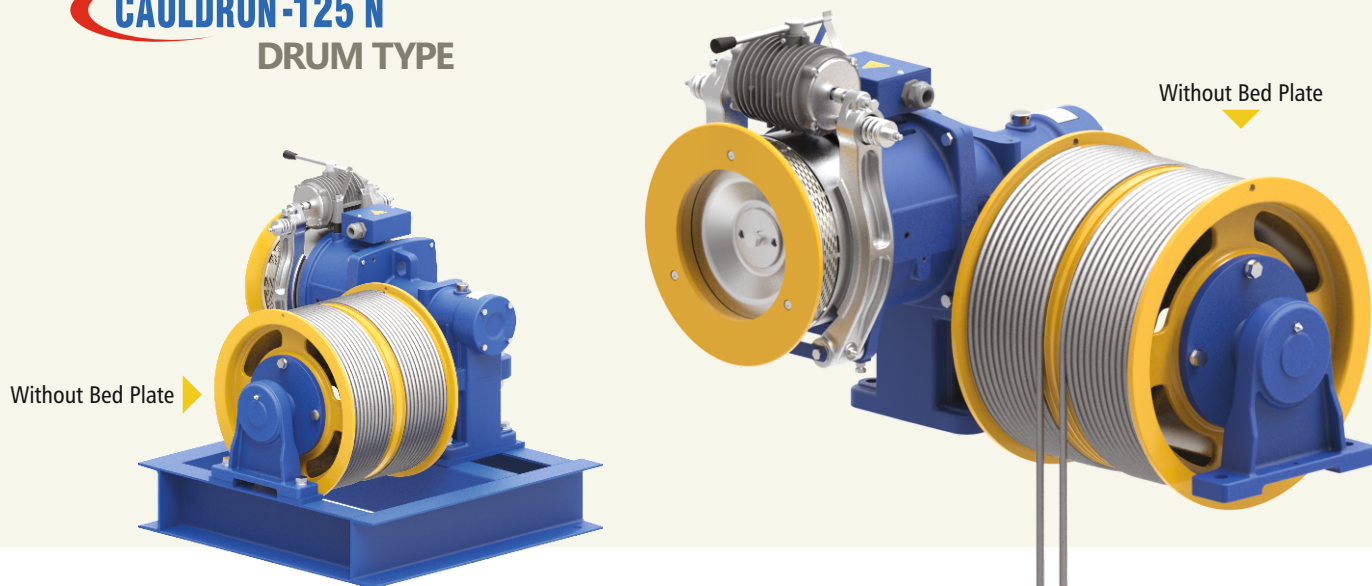
Company Profile

SHARP ENGINEERS, was established in 1994 in Ahmedabad (Gujarat) as a manufacturer of all kind of elevator traction machines for elevators. Sharp Engineers has an area of 81,000 sq. ft with their original asset of 200 employees and with the production capacity of more than 35000 units per annum. We always so much focused on the constant process of research and development to satisfy the need and comfort of the market. SHARP ENGINEERS have more than 30 years of experience, we developed over the years a complete range of products, geared and gearless machines. Sharp Engineers have optimized the meaning of Quality, Customer Service, after sales service and all other aspects concerned with creating a world class brand.

Our Production entirely made in Ahmedabad, equipped with the most innovative and efficient technical-productive solutions. Automation, efficiency, high technology which guarantees the production and supply of quality products in less time, which meets the needs of extreme speed and flexibility of the elevator market. Sharp engineers believes to provide the customer - best lifting solution according to their technical specifications of the system, starting from the activity of commercial technical support and continue throughout the production process to the final testing, in-line delivery with best industry standards and after sales service. We are exporting our ranges of Geared, Gearless & their parts worldwide over the 25 countries since decades. We have numerous special versions and options which are available on request.



CAULDRON[®]-125 N DRUM TYPE



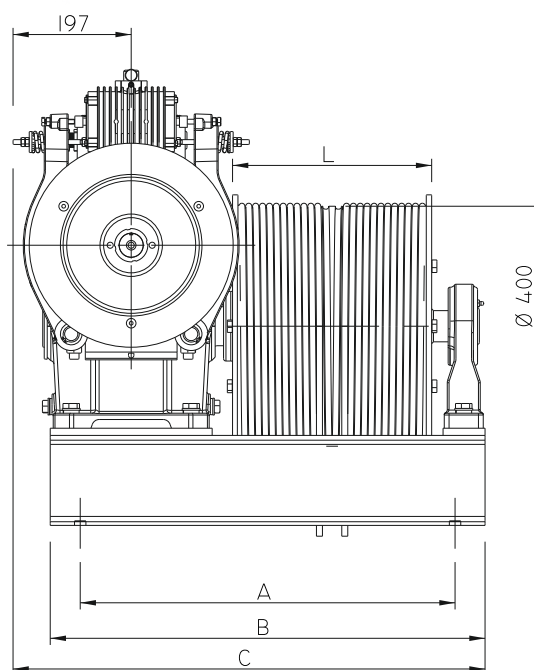
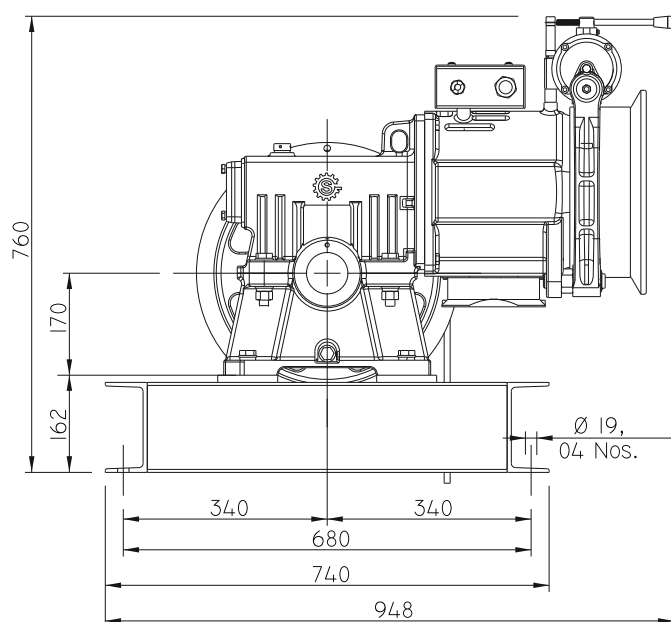
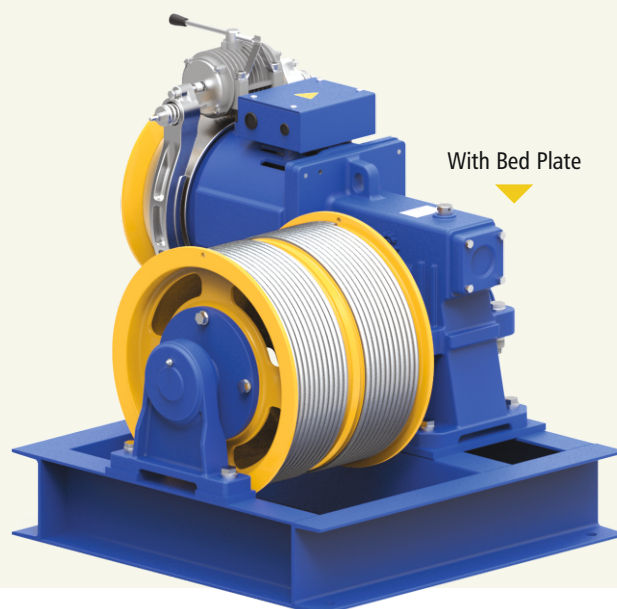
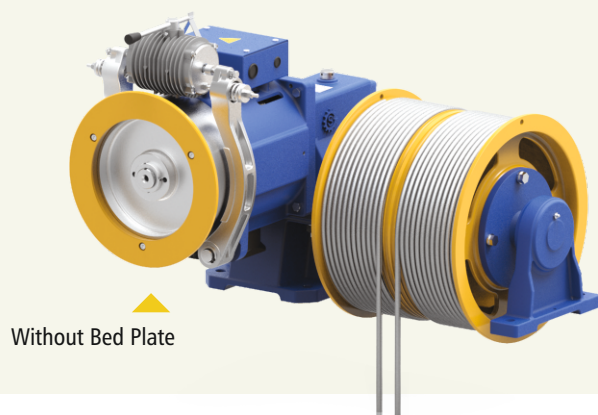
(All dimensions are in mm)

Travelling (mtr)	Drum L (mm)	A (mm)	B (mm)	C (mm)	N x Ø D
12	332	605	705	782	2 x Ø 10
21	498	771	871	948	2 x Ø 10

Roping 1:1

Machine	Max. Load Carrying Capacity Including Cabin Weight	Async. Speed	Gear Ratio	Motor Detail		RPM	Drum Dia	Rope Dia	Ropes	Max. Travel
	(Kg)	(m/sec)		(kw)	(HP)					
CAULDRON 125N	500	0.57	1/52	5.5	7.5	1440	400	10	2 (1+1)	21

CAULDRON[®]-135 N DRUM TYPE



(All dimensions are in mm)

Travelling (mtr)	Drum L (mm)	A (mm)	B (mm)	C (mm)	N x Ø D
12	332	625	725	787	2 x Ø 10
21	498	791	891	953	2 x Ø 10

Roping 1:1

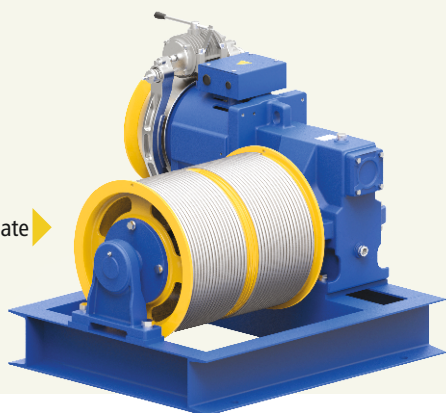
Machine	Max. Load Carrying Capacity Including Cabin Weight	Async. Speed	Gear Ratio	Motor Detail		RPM (Async.)	Drum Dia (mm)	Rope Dia (mm)	Ropes	Max. Travel (mtr)
	(Kg)	(m/sec)		(kw)	(HP)					
CAULDRON 135N	750	0.54	1/55	7.5	10.0	1440	400	10	2 (1+1)	21



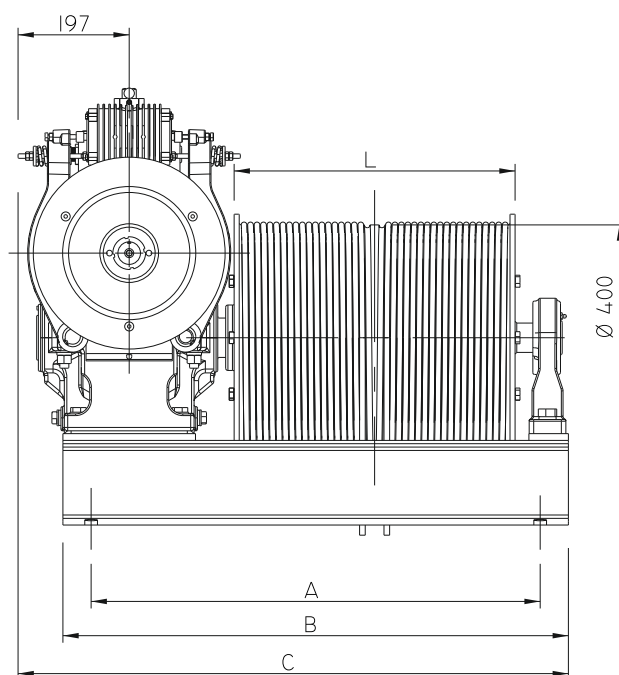
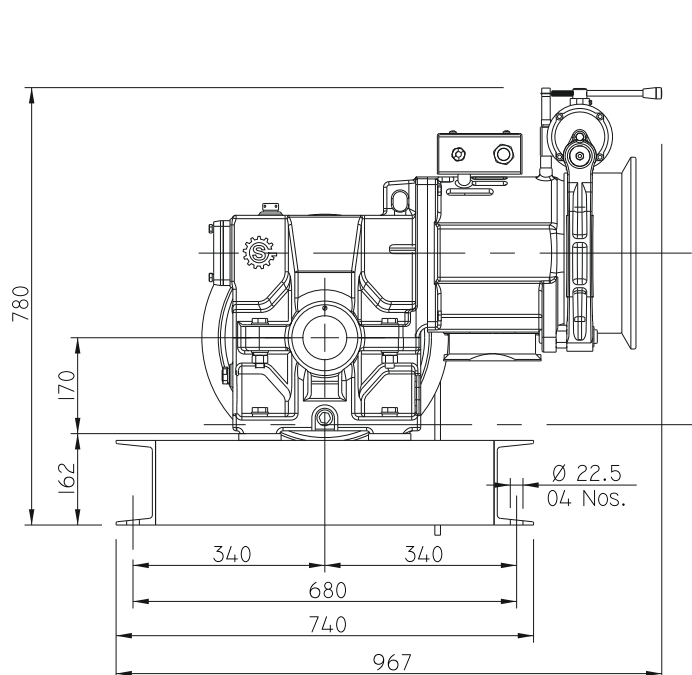
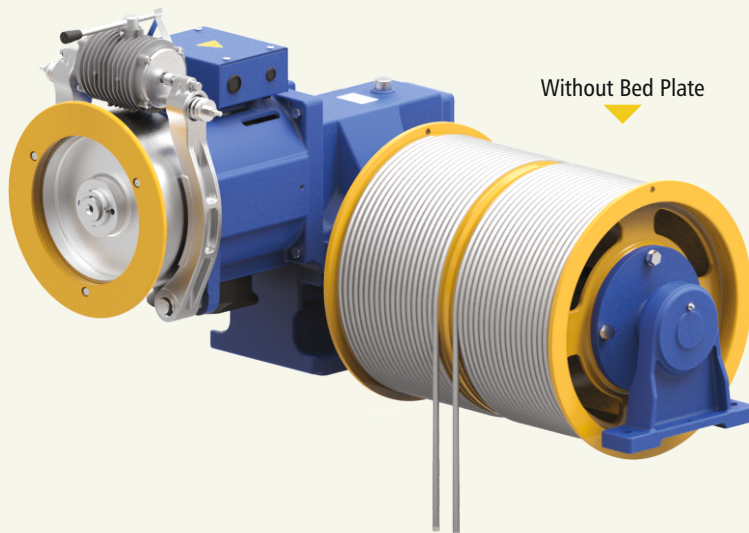
CAULDRON®-150

DRUM TYPE

With Bed Plate



Without Bed Plate



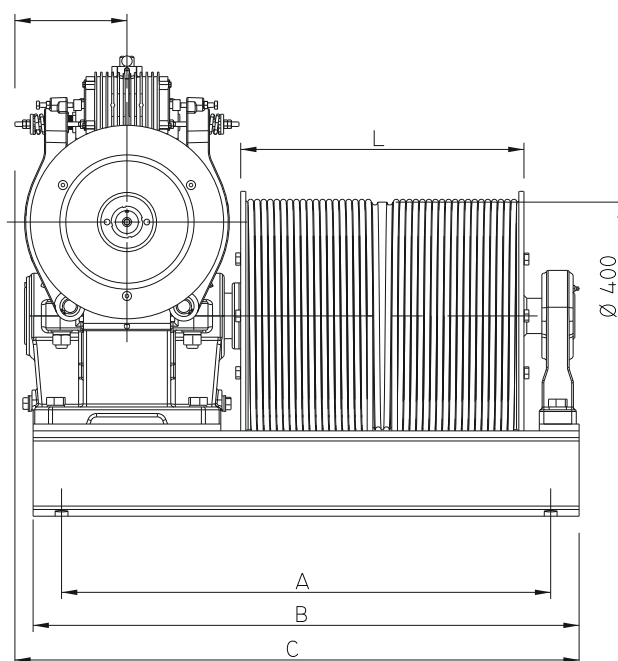
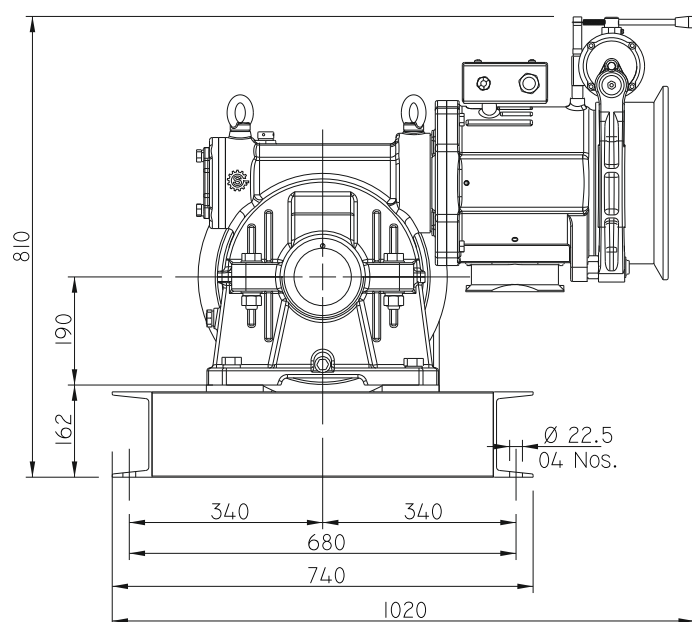
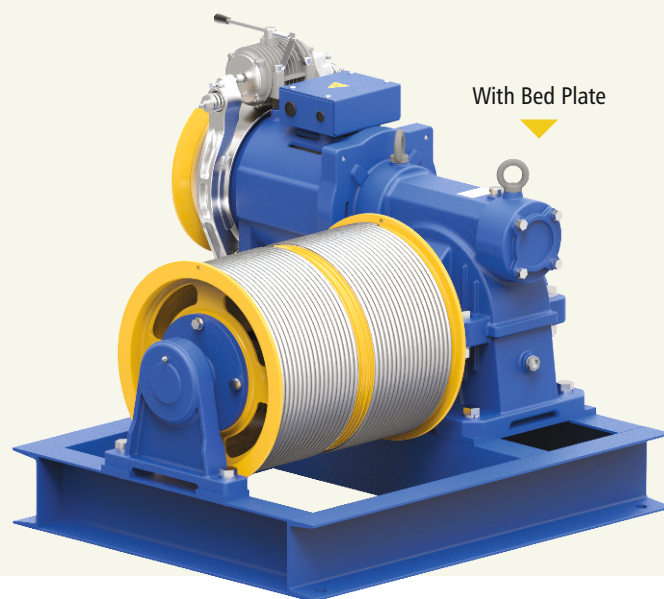
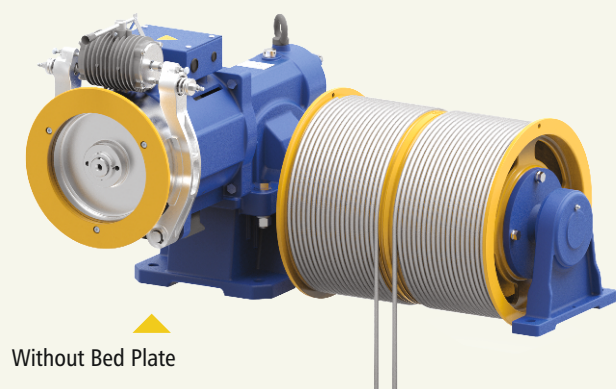
(All dimensions are in mm)

Travelling (mtr)	Drum L (mm)	A (mm)	B (mm)	C (mm)	N x Ø D
12	332	630	730	810	2 x Ø 10
21	498	796	896	976	2 x Ø 10

Roping 1:1

Machine	Max. Load Carrying Capacity Including Cabin Weight	Async. Speed	Gear Ratio	Motor Detail		RPM	Drum Dia	Rope Dia	Ropes	Max. Travel
	(Kg)	(m/sec)		(kw)	(HP)	(Async.)	(mm)	(mm)		(mtr)
CAULDRON 150	1000	0.50	1/59	9.0	12.5	1440	400	10	2 (1+1)	21

CAULDRON[®]-165 N DRUM TYPE



(All dimensions are in mm)

Travelling (mtr)	Drum L (mm)	A (mm)	B (mm)	C (mm)	N x Ø D
12	332	694	794	832	2 x Ø 10
21	498	860	960	998	2 x Ø 10

Roping 1:1

Machine	Max. Load Carrying Capacity Including Cabin Weight	Async. Speed	Gear Ratio	Motor Detail		RPM	Drum Dia	Rope Dia	Ropes	Max. Travel
	(Kg)	(m/sec)		(kw)	(HP)	(Async.)	(mm)	(mm)		(mtr)
CAULDRON 165N	1250	0.55	1/55	11.0	15.0	1440	400	10	2 (1+1)	21



SCAN ME



552, 'A' Road, Cross Road-12,
G.I.D.C. Kathwada,
Ahmedabad-382430.
Gujarat, India.



+ 91 79 2290 1711,12,14, 15.



info@sharpengineers.com
sales@sharpengineers.com



www.sharpengineers.com

