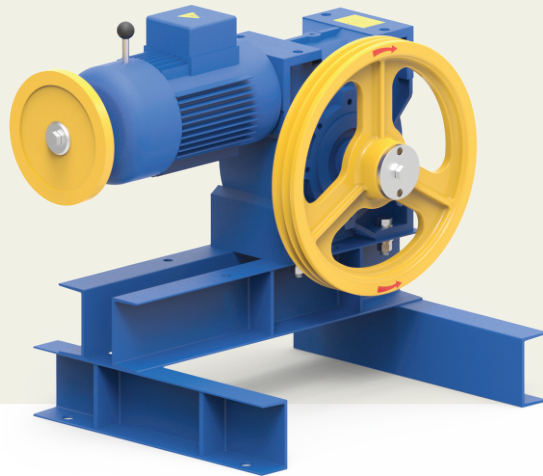


CAULDRON SERIES

Geared Traction Machine

Dumbwaiter HEN-06 Pulley Type



Static Load (Kg)
700



Gear Ratio
1/50



Oil Capacity (Ltr)
1.0

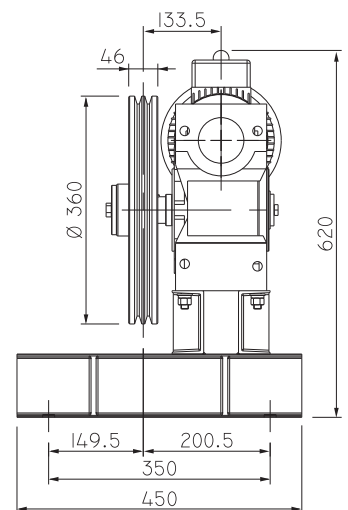
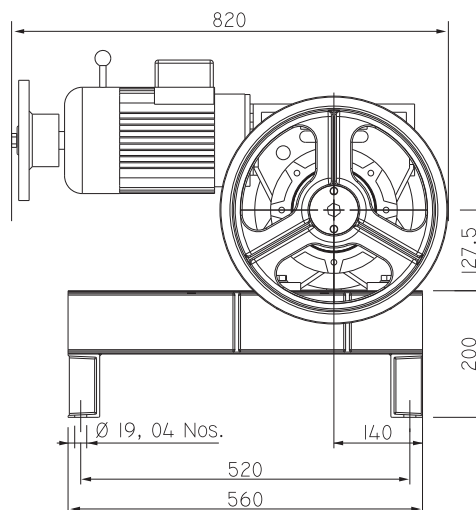


Brake Voltage (DC)
190V



Weight of Machine (Kg)
125*

* Weight of machine is varies according to selection of sheave, Motor & Drive system.



(All dimensions are in mm)

Geared Traction Machine

Listed loads don't include the rope's weight.
In order to know the net loads capacity, subtract rope's weight from the listed loads.

Position of the gearbox Up
Counter weight 50%
Plant efficiency 0.80

AC VVVF

415 V

50 Hz

Travelling : - 10 mtr

Machine	Duty Load		Roping	Async. Speed (m/sec)	Ratio	Motor Detail		RPM (Async.)	Rated Current (A)	Sheave Specification Sheave Dia X Rope Dia. X No. of Groove
	Person	(Kg)				(Kw)	(HP)			
HEN - 06	250		1:1	0.50	1/50	2.2	3.0	1400	5.1	Ø 360 X 10mm X 2 Grv.

Kindly contact us for various speed and load combination