



Static Load (kg)
7000



Gear Ratio
1/46



Brake Voltage (DC)
110V

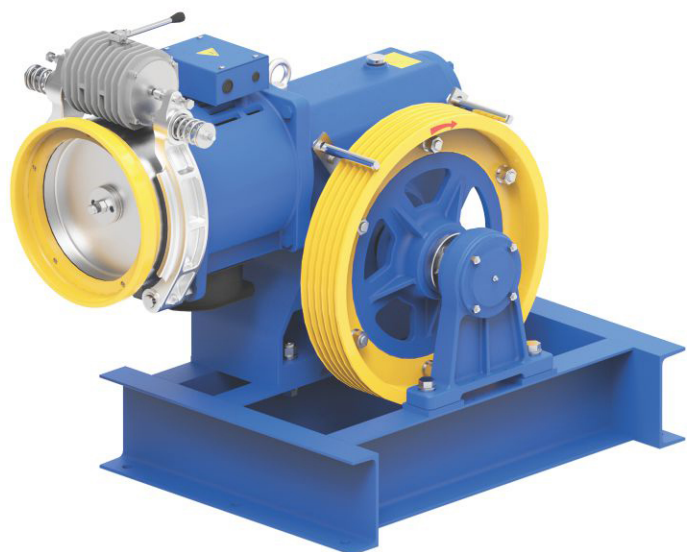


Oil Capacity (Ltr)
10.0



Weight of Machine (kg)
709* (With Bed Plate)*

* Weight of machine is varies according to selection of sheave, Motor.



Geared Traction Machine



Listed loads don't include the rope's weight.
In order to know the net loads capacity, subtract rope's weight from the listed loads.

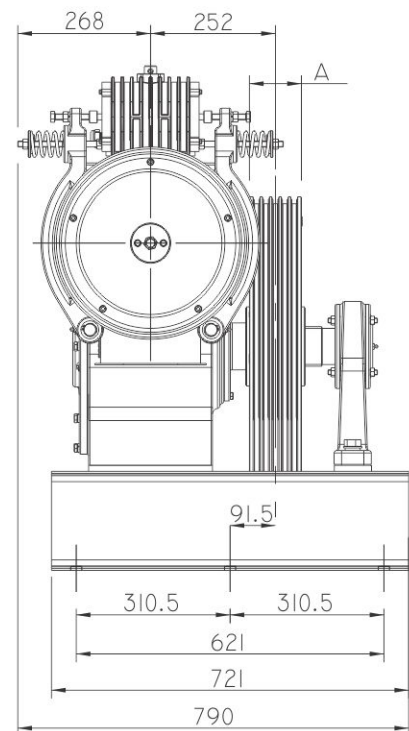
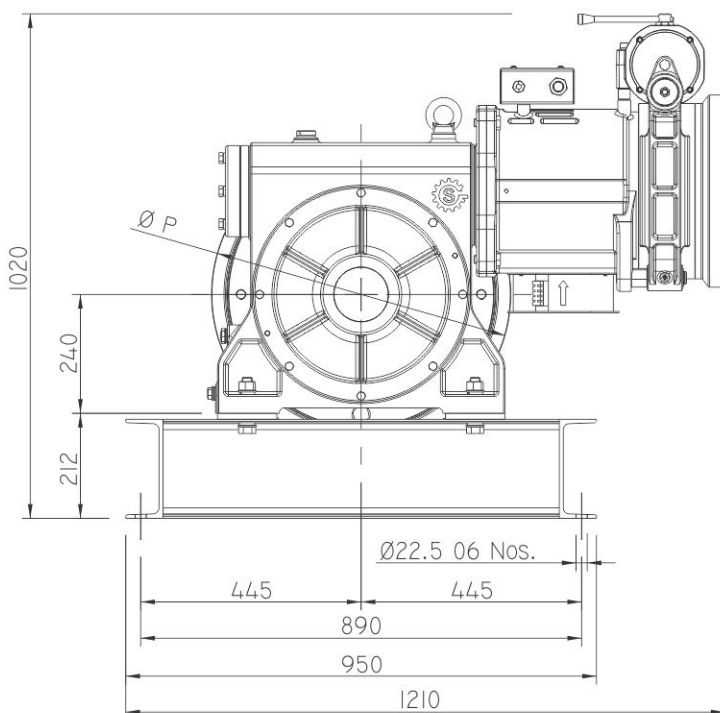
Position of the gearbox Up
Counter weight 50%
Plant efficiency 0.80

AC VVVF 400 V 50 Hz Travelling : - 30 mtr

Machine	Duty Load		Roping	Async. Speed	Ratio	Motor Detail		RPM	Rated Current	Sheave Specification
	Person	Kg		(m/sec)		(kw)	(HP)	(Async.)	(A)	Sheave Dia x Rope Dia. X No. of Groove
TUSKER	20	1360	1:1	1.00	1/46	15.0	20.0	1455	29.9	Ø 600 X 13mm X 5 Grv.
	26	1768		1.00	1/46	18.5	25.0	1455	36.0	Ø 600 X 13mm X 6 Grv.
	2500		2:1	0.50	1/46	15.0	20.0	1455	29.9	Ø 600 X 13mm X 5 Grv.
	3000			0.50	1/46	15.0	20.0	1455	29.9	Ø 600 X 13mm X 5 Grv.

Kindly contact us for various speed and load combination

Ø P	N X Ød	A
Ø600	5 X Ø13	105
Ø600	6 X Ø13	124



(All dimensions are in mm)