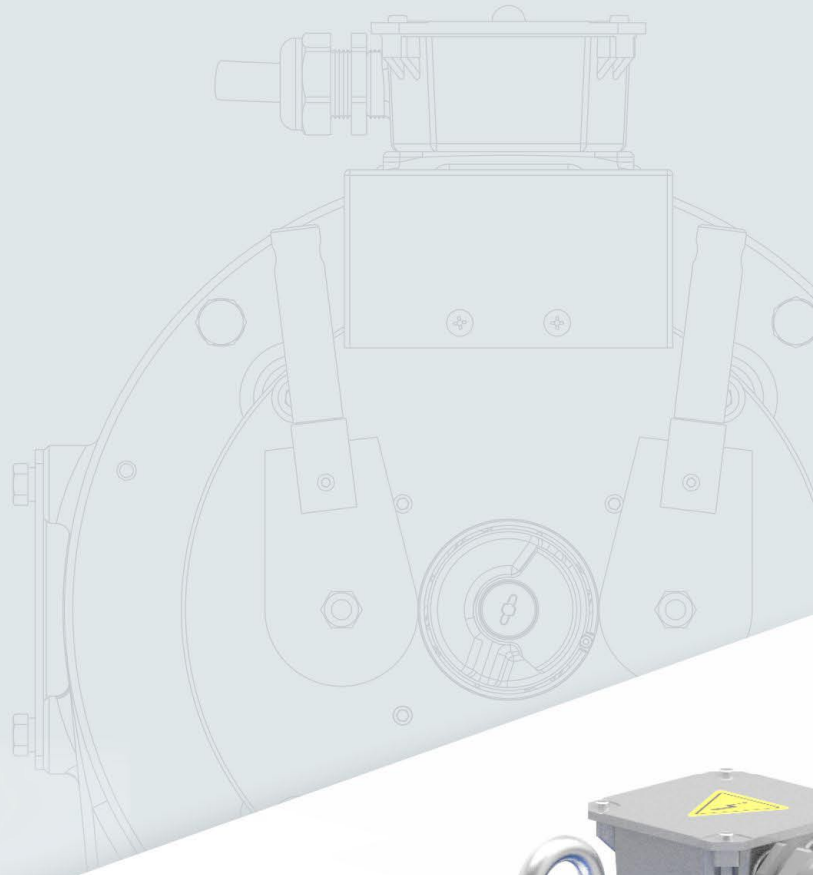


STERN

GEARLESS TRACTION MACHINE



Quality That Inspires Trust





31
Years
Journey to
Excellence

More Than **42,000** Units Annual Production Capacity

Company **Profile**

SHARP ENGINEERS, was established in 1994 in Ahmedabad (Gujarat) as a manufacturer of all kind of elevator traction machines for elevators. Sharp Engineers has an area of 81,000 sq. ft with their original asset of 200 employees and with the production capacity of more than 42;000 units per annum. We always so much focused on the constant process of research and development to satisfy the need and comfort of the market. SHARP ENGINEERS have more than 31 years of experience, we developed over the years a complete range of products, geared and gearless machines. Sharp Engineers have optimized the meaning of Quality, Customer Service, after sales service and all other aspects concerned with creating a world class brand.



Our Production entirely made in Ahmedabad, equipped with the most innovative and efficient technical-productive solutions. Automation, efficiency, high technology which guarantees the production and supply of quality products in less time, which meets the needs of extreme speed and flexibility of the elevator market. Sharp engineers believes to provide the customer - best lifting solution according to their technical specifications of the system, starting from the activity of commercial technical support and continue throughout the production process to the final testing, in-line delivery with best industry standards and after sales service. We are exporting our ranges of Geared, Gearless & their parts worldwide over the 25 countries since decades. We have numerous special versions and options which are available on request.



Mr. Babubhai J Patel



The perfectionist who ensures every detail is flawless, delivering quality and discipline with unmatched precision.

Managing Partner
SHARP ENGINEERS

Mr. Mukesh R. Patel



The strategist whose patience and vision strengthen global relationships and drive new opportunities for growth.

Managing Partner
SHARP ENGINEERS



Voltage 400 V



Roping 2:1



Brake 110 VDC



Max. Static Load 3400 Kg



Weight of Machine (kg) 128*

* Weight of machine is varies according to selection of sheave, Motor & Drive system.



Gearless Traction Machine

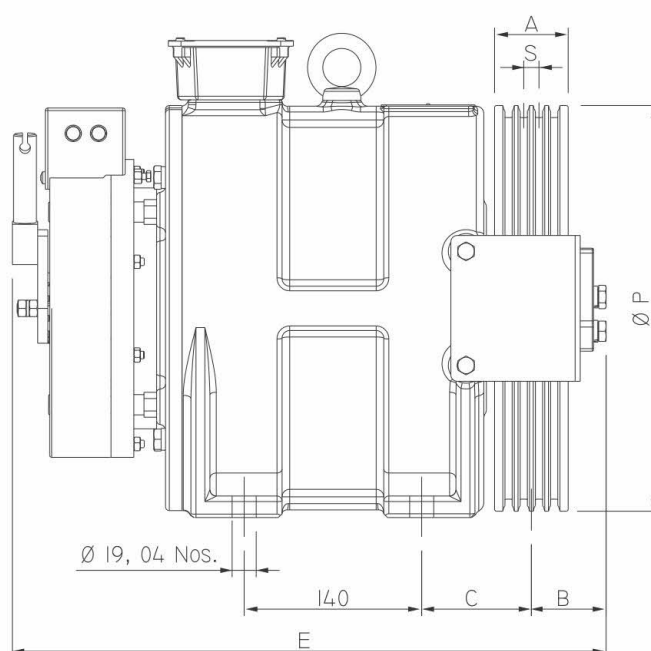
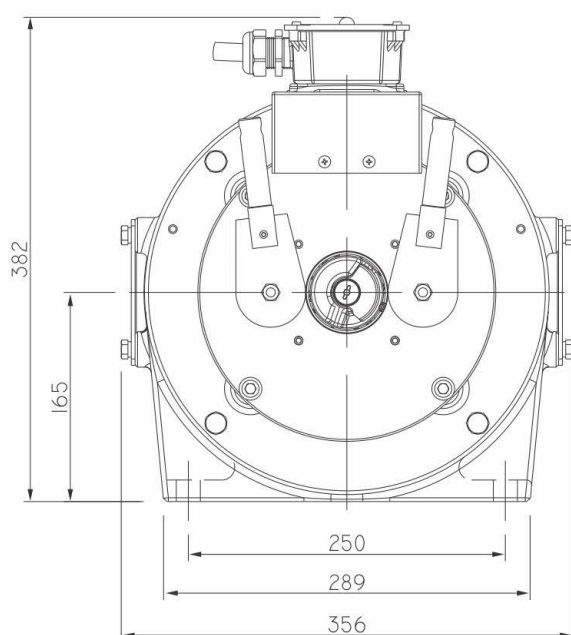


STERN 61
Gearless Traction Machine

Specification	Load (kg)	Lift Speed (m/s)	Height (m)	Sheave Dia (mm)	No. of Groove X Rope Dia	Current (A)	Toque (Nm)	Rated Speed (rpm)	Frequency (Hz)	Power (kW)	Pole	Rating	INS Class.	IP Code
ST61-6P1A0	408	1.00	≤ 60	Ø240	5 X Ø6.5	7.0	165	159	26.5	2.7	20	S5 (40%)	F Class	IP-40
ST61-6P1B0	408	1.00	≤ 60	Ø320	4 X Ø8.0	7.0	230	119	19.9	3.0	20	S5 (40%)	F Class	IP-40

Kindly contact us for various speed and load combination

Ø P	A	B	C	N X Ø D	E	S
Ø 240	64	56	89.5	5 X Ø 6.5	470	11
Ø 320	58	59	86.5	4 X Ø 8	470	12



- (All dimensions are in mm)
- Subject to change without any prior notice!

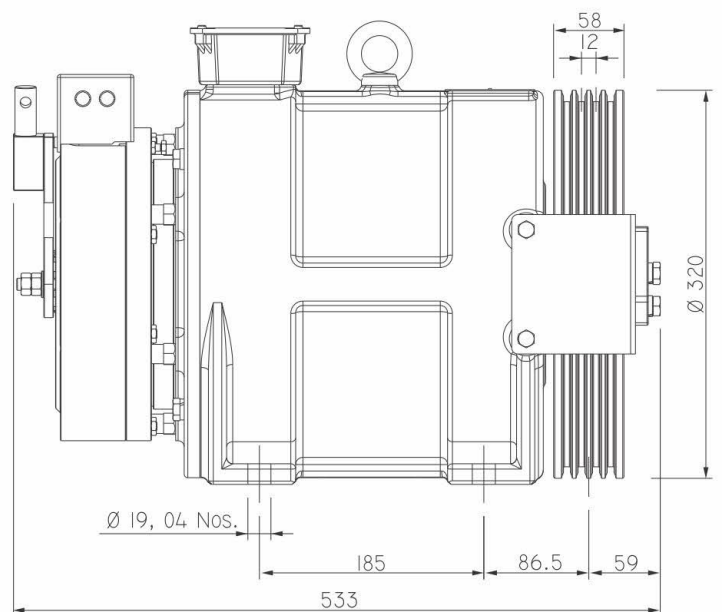
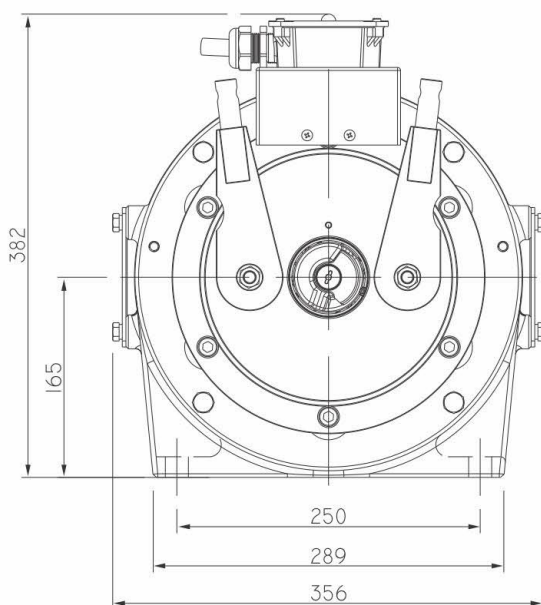
Gearless Traction Machine



STERN 81
Gearless Traction Machine

Specification	Load (kg)	Lift Speed (m/s)	Height (m)	Sheave Dia (mm)	No. of Groove X Rope Dia	Current (A)	Toque (Nm)	Rated Speed (rpm)	Frequency (Hz)	Power (kW)	Pole	Rating	INS Class.	IP Code
ST81-8P1B0	544	1.00	≤ 60	Ø320	4 X Ø8.0	9.2	305	119	19.9	3.8	20	S5 (40%)	F-Class	IP-40

Kindly contact us for various speed and load combination



- (All dimensions are in mm)
- Subject to change without any prior notice!



Voltage 400 V



Roping 2:1



Brake 110 VDC



Max. Static Load 3400 Kg



Weight of Machine (kg) 167*

* Weight of machine is varies according to selection of sheave, Motor & Drive system.





Voltage 400 V



Roping 2:1



Brake 110 VDC



Max. Static Load 3400 Kg



Weight of Machine (kg) 150*

* Weight of machine is varies according to selection of sheave, Motor & Drive system.



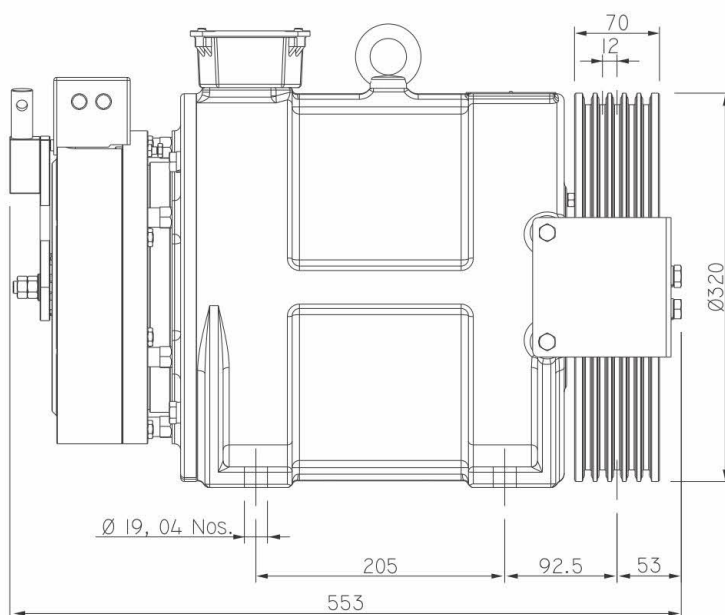
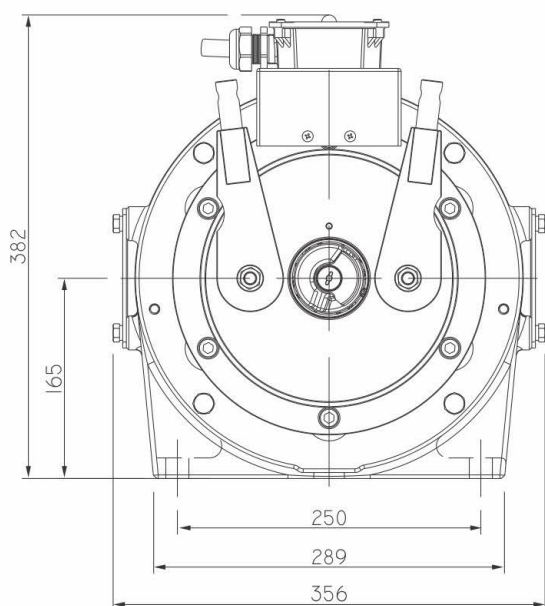
Gearless Traction Machine



STERN₁₀₁
Gearless Traction Machine

Specification	Load (kg)	Lift Speed (m/s)	Height (m)	Sheave Dia (mm)	No. of Groove X Rope Dia	Current (A)	Toque (Nm)	Rated Speed (rpm)	Frequency (Hz)	Power (kW)	Pole	Rating	INS Class.	IP Code
ST101-10P1A0	680	1.00	≤ 80	Ø320	5 X Ø8.0	12.0	380	119	19.9	4.7	20	S5 (40%)	F-Class	IP40

Kindly contact us for various speed and load combination



- (All dimensions are in mm)
- Subject to change without any prior notice!



Voltage 400 V



Roping 2:1



Brake 110 VDC

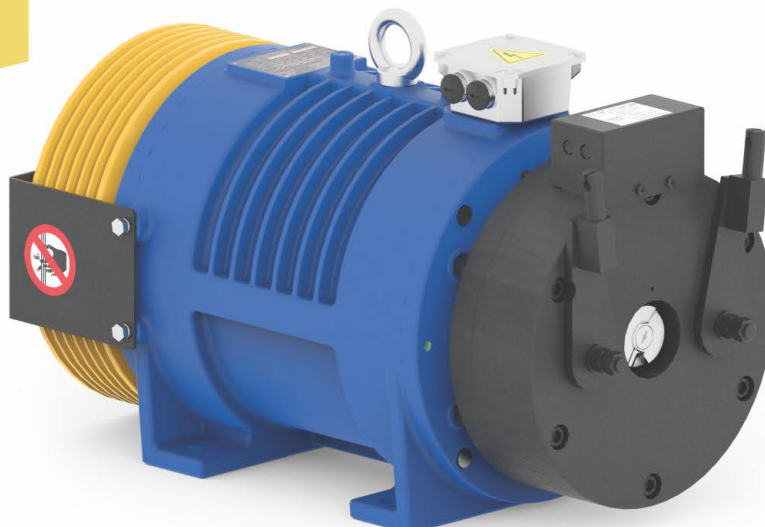


Max. Static Load 4000 Kg.



Weight of Machine (kg) 215*

* Weight of machine is varies according to selection of sheave, Motor & Drive system.



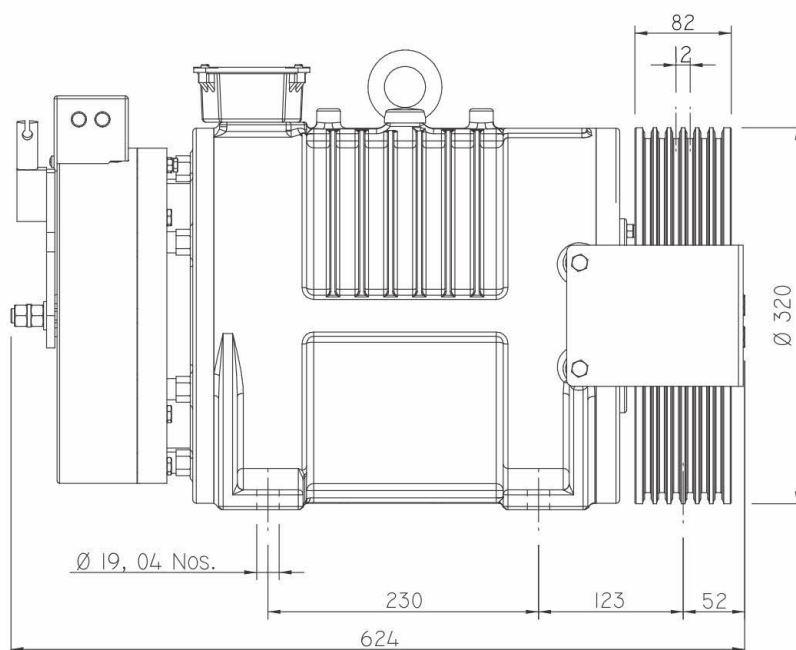
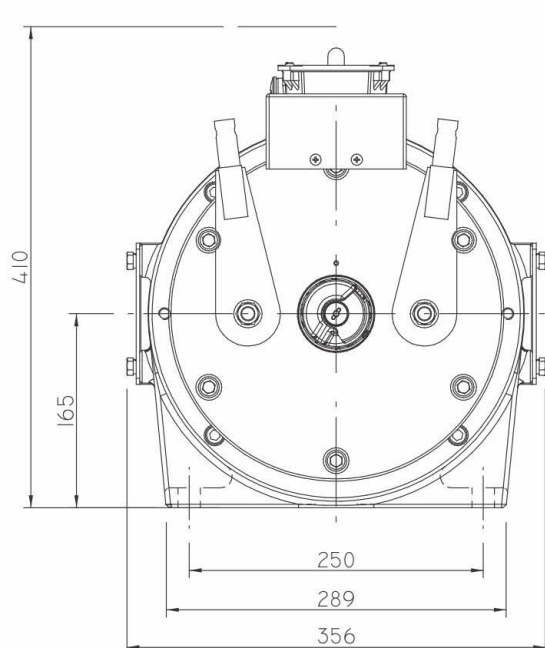
Gearless Traction Machine



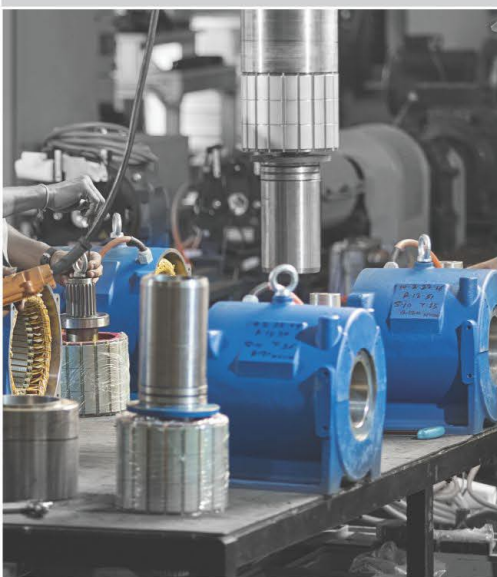
STERN 131
Gearless Traction Machine

Specification	Load (kg)	Lift Speed (m/s)	Height (m)	Sheave Dia (mm)	No. of Groove X Rope Dia	Current (A)	Toque (Nm)	Rated Speed (rpm)	Frequency (Hz)	Power (kW)	Pole	Rating	INS Class.	IP Code
ST131-13P1A0	884	1.00	≤ 80	Ø320	6 X Ø8.0	16.0	490	119	19.9	6.0	20	S5 (40%)	F-Class	IP40

Kindly contact us for various speed and load combination



- (All dimensions are in mm)
- Subject to change without any prior notice!



SERVICE OVERVIEW



Better Service for
Satisfied Customers

As we say 'Elevating the Experience'
we follow the same motto to provide
service to all our OEM Partners.
We are there 24 X 7 for all our partners.



FAST SERVICE



RELIABILITY



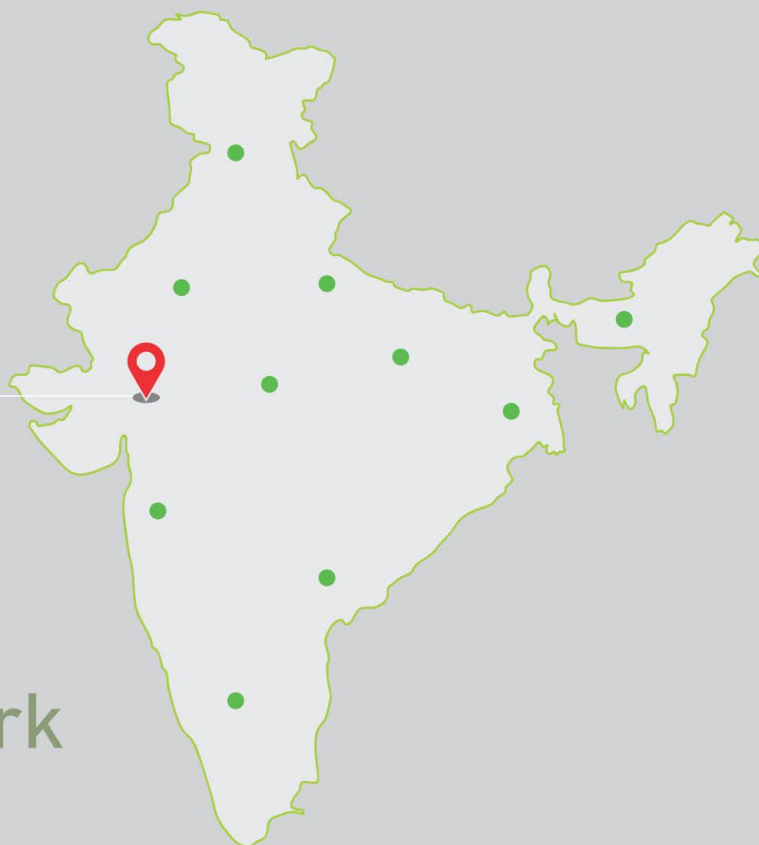
SAFETY



SERVICE



SHARPTM
ENGINEERS



Technical Support by Well Built

Service Network



25 Global Presence Countries



25
Global
Presence
Countries



552, 'A' Road, Cross Road-12,
G.I.D.C. Kathwada, Ahmedabad - 382430.
Gujarat, India.

Phone : + 91 79 2290 1711, 12,14, 15.

Mobile : +91 97129 11912, 82670 08900

E-mail : info@sharpengineers.com
sales@sharpengineers.com

Website : www.sharpengineers.com



SCAN ME

Follow Us

