

31
YEARS

Journey to
Excellence



SHARPTM
ENGINEERS

GEARLESS

TRACTION MACHINE

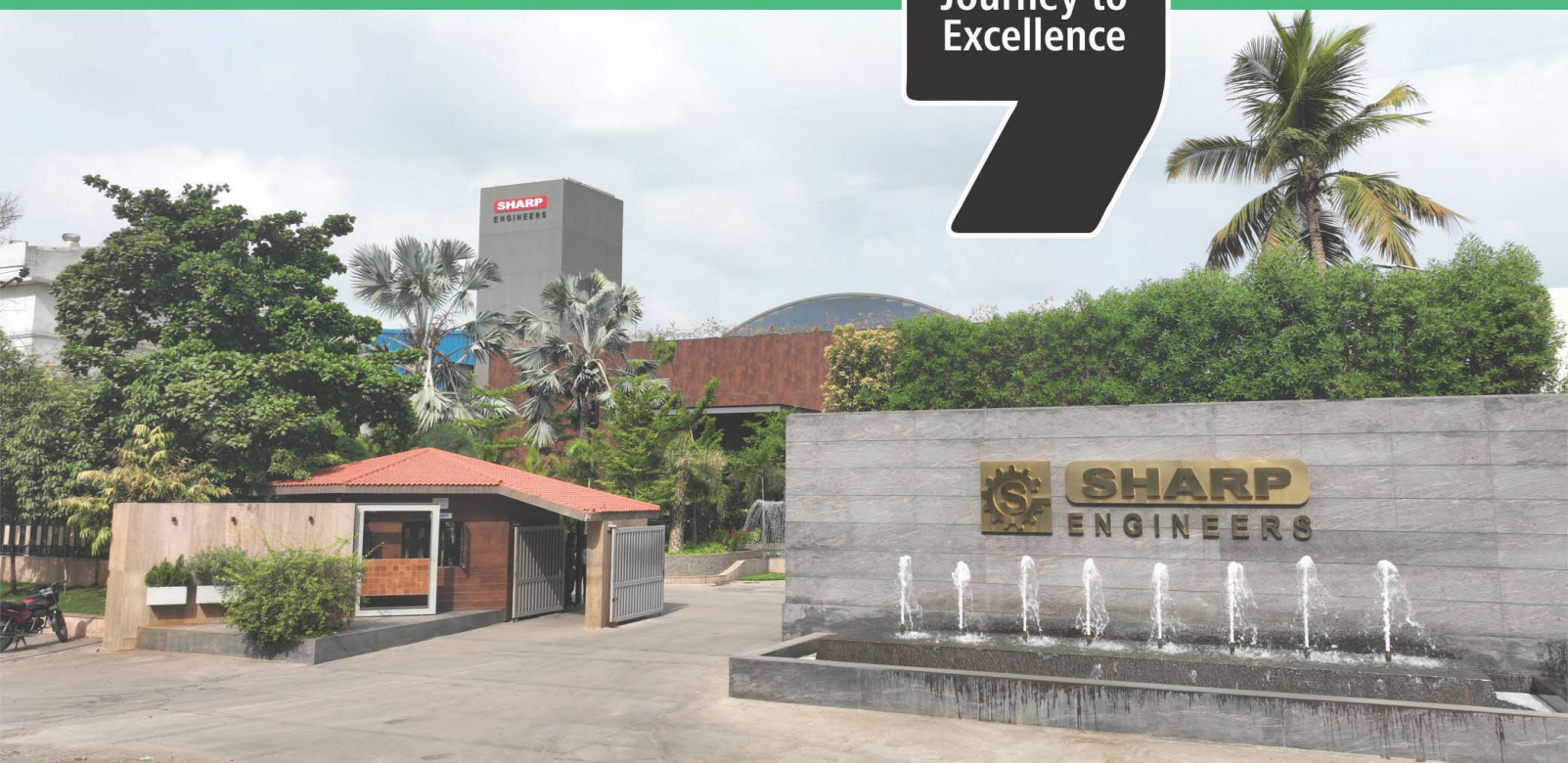
STRIVE SERIES
BELT DRIVEN MACHINE



Quality That Inspires Trust

www.sharpengineers.com

31Years
Journey to
Excellence



Welcome to Our Company



SHARP ENGINEERS, was established in 1994 in Ahmedabad (Gujarat) as a manufacturer of all kind of elevator traction machines for elevators. Sharp Engineers has an area of 81,000 sq. ft with their original asset of 200 employees and with the production capacity of more than 42000 units per annum. We always so much focused on the constant process of research and development to satisfy the need and comfort of the market. SHARP ENGINEERS have more than 31 years of experience, we developed over the years a complete range of products, geared and gearless machines. Sharp Engineers have optimized the meaning of Quality, Customer Service, after sales service and all other aspects concerned with creating a world class brand.

Our Production entirely made in Ahmedabad, equipped with the most innovative and efficient technical-productive solutions. Automation, efficiency, high technology which guarantees the production and supply of quality products in less time, which meets the needs of extreme speed and flexibility of the elevator market. Sharp engineers believes to provide the customer - best lifting solution according to their technical specifications of the system, starting from the activity of commercial technical support and continue throughout the production process to the final testing, in-line delivery with best industry standards and after sales service. We are exporting our ranges of Geared, Gearless & their parts worldwide over the 25 countries since decades. We have numerous special versions and options which are available on request.



STRIVE - Introduces a cutting-edge, eco-conscious belt system, engineered with the latest in advanced technology.

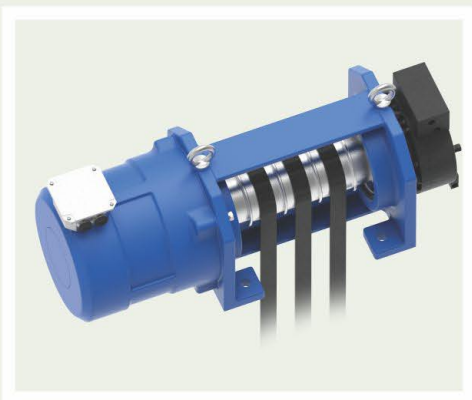
The STRIVE-BELT Drive System is SHARP ENGINEER's innovative, next-generation, eco-friendly technology that replaces traditional steel wire ropes with durable, high-performance belts. This advanced system offers a longer lifespan, improved energy efficiency, and enhanced overall performance.



Lifespan

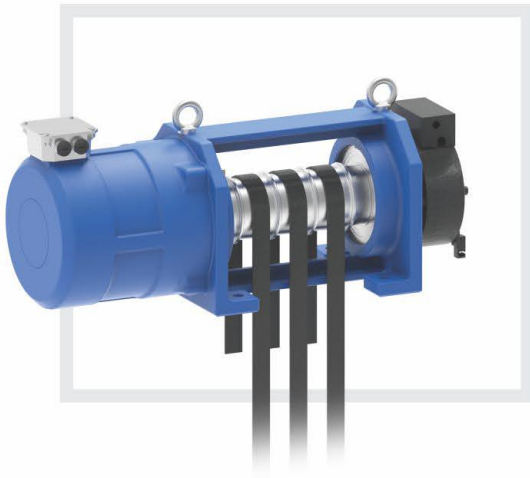
The high-quality steel belt drive ensures smooth, stable, and reliable operation.

STRIVE-BELT offers three times the lifespan of traditional steel wire ropes while weighing 40% less. It is highly resistant to corrosion, requires no lubrication, and features a belt break detection system that ensures maximum safety and reliability.



Smooth Riding & Enhanced Safety

The key to a smooth and safe ride lies in the traction machine. This innovative design ensures the belt consistently self-centers, minimizing misalignment and wear while enhancing stability and performance.

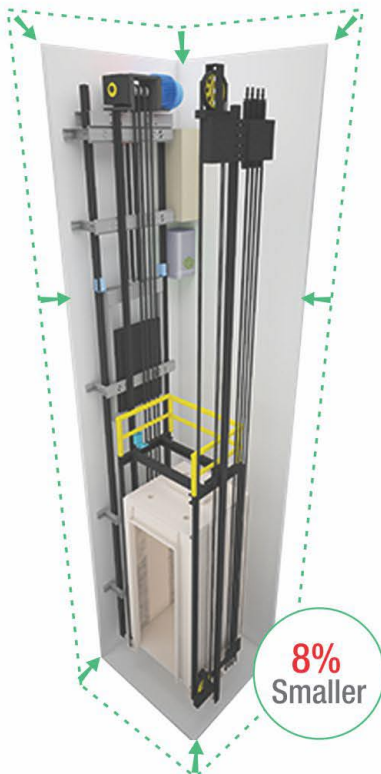


Compact

Small Size. Big Performance.

The compact design of our traction machine, enabled by STRIVE-BELT Drive's smaller bending radius compared to wire ropes, reduces overall size.

This space-saving innovation allows for taller, more comfortable elevator cabins.



Enhanced Hoistway Efficiency

Our innovative STRIVE-BELT Drive System reduces elevator shaft size by up to 8%, enabling more flexible building designs and increasing usable space.



Eco-Friendly

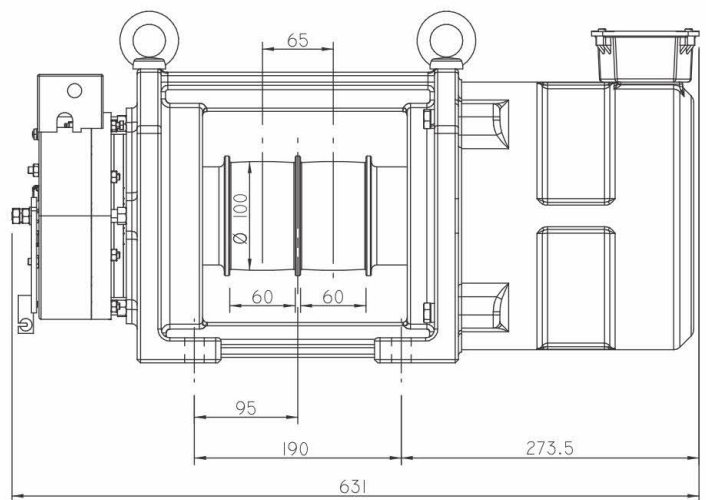
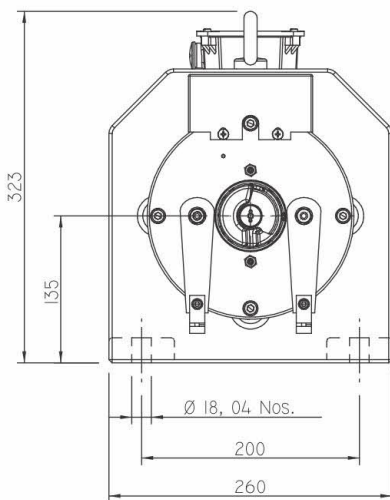
Sustainable for the Environment

While traditional steel ropes require regular oil maintenance due to their material properties, the STRIVE-BELT system eliminates the need for lubrication-simplifying maintenance and providing a more environmentally friendly solution.

STRIVE-II

BELT DRIVEN MACHINE

Max. Static Load (Kg)	2300
Duty Load (Kg)	450
Roping	2:1
Sheave Diameter (mm)	100
Supply Voltage	400 V
Brake Voltage	110 VDC
Pole	12
Rating	S5-40%
Insulation	F Class
IP Code	IP 40
Weight of Machine (Kg)	93



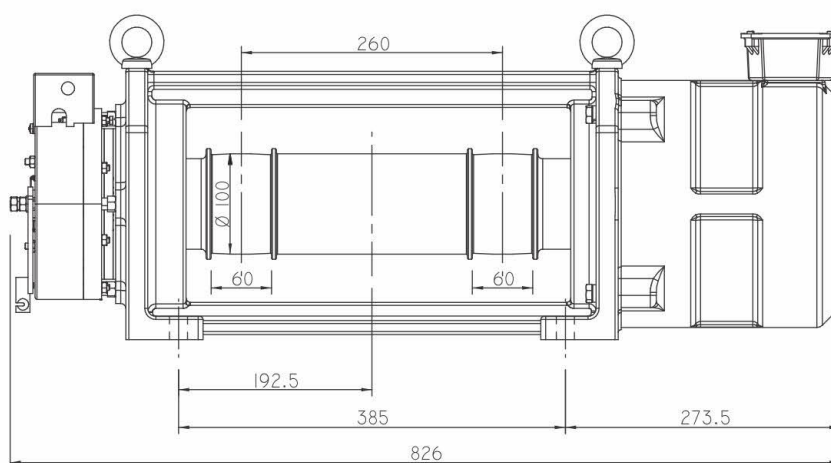
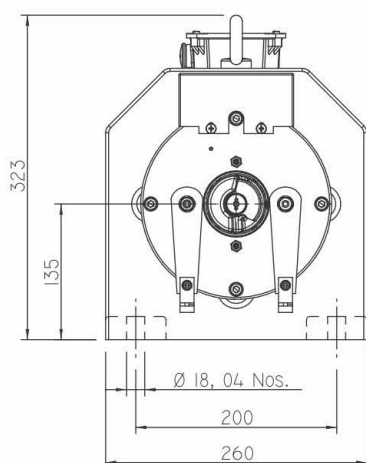
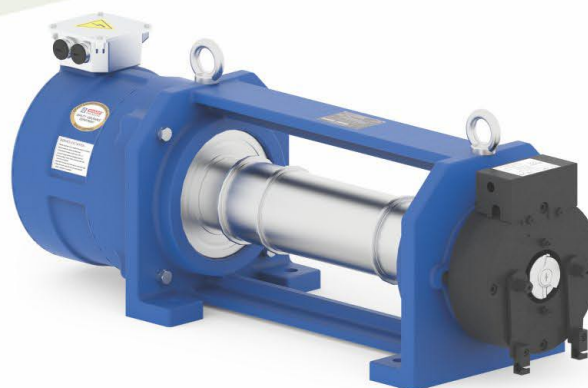
• (All dimensions are in mm) • Subject to change without any prior notice!

Specification	Load (Kg)	Lift Speed (m/sec)	Sheave Dia (mm)	Belt Detail (no x Width)	Sheave Pitch (mm)	Rated Current (A)	Rated Torque (Nm)	Rated RPM	Frequency (Hz)	O/P Power (Kw)
STRIVE-II-1.00-408	408	1.00	100	2 X 30	65	5.0	70	382	38.2	2.8
STRIVE-II-1.00-450	450	1.00	100	2 X 30	65	5.7	80	382	38.2	3.2

STRIVE-II D

BELT DRIVEN MACHINE

Max. Static Load (Kg)	2300
Duty Load (Kg)	450
Roping	2:1
Sheve Diameter (mm)	100
Supply Voltage	400 V
Brake Voltage	110 VDC
Pole	12
Rating	S5-40%
Insulation	F Class
IP Code	IP 40
Weight of Machine (Kg)	115



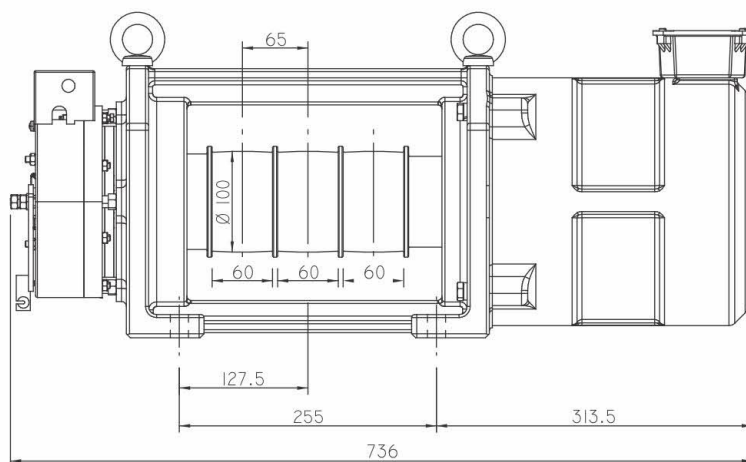
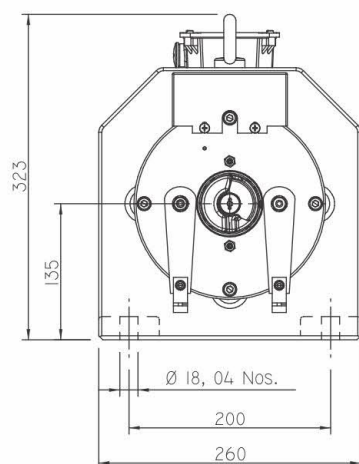
• (All dimensions are in mm) • Subject to change without any prior notice!

Specification	Load (Kg)	Lift Speed (m/sec)	Sheave Dia (mm)	Belt Detail (no x Width)	Sheave Pitch (mm)	Rated Current (A)	Rated Torque (Nm)	Rated RPM	Frequency (Hz)	O/P Power (Kw)
STRIVE-II-D-1.00-408	408	1.00	100	2 X 30	260	5.0	70	382	38.2	2.8
STRIVE-II-D-1.00-450	450	1.00	100	2 X 30	260	5.7	80	382	38.2	3.2

Kindly contact us for various speed and load combination

STRIVE-III BELT DRIVEN MACHINE

Max. Static Load (Kg)	2700
Duty Load (Kg)	680
Roping	2:1
Sheve Diameter (mm)	100
Supply Voltage	400 V
Brake Voltage	110 VDC
Pole	12
Rating	S5-40%
Insulation	F Class
IP Code	IP 40
Weight of Machine (Kg)	115



• (All dimensions are in mm) • Subject to change without any prior notice!

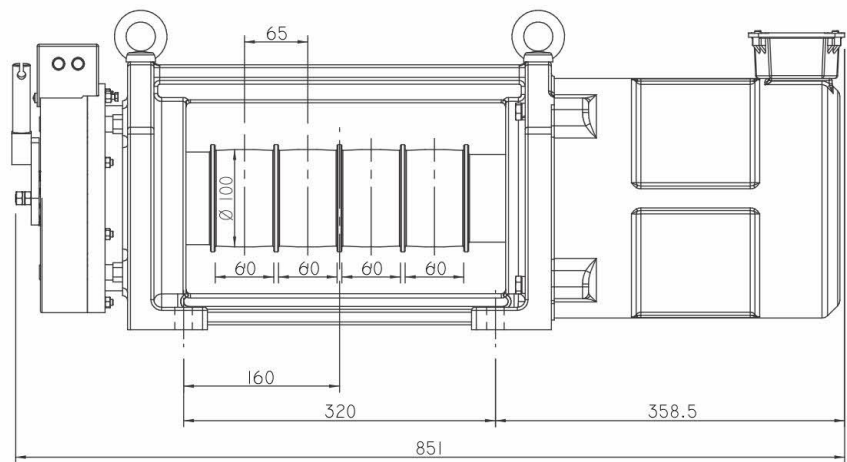
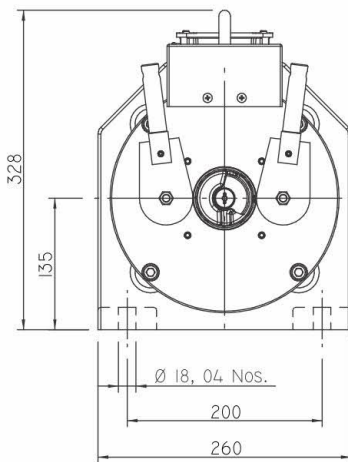
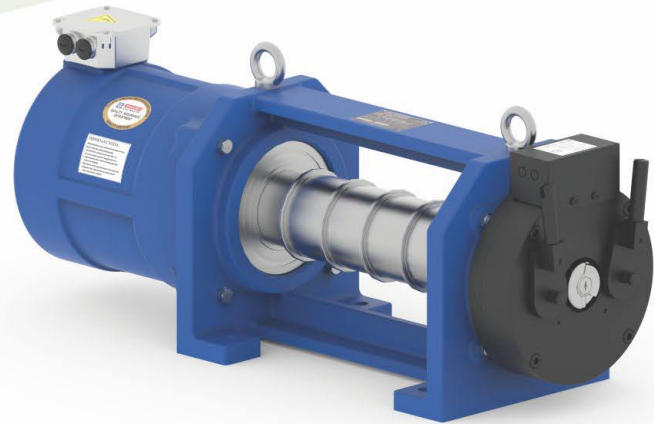
Specification	Load (Kg)	Lift Speed (m/sec)	Sheave Dia (mm)	Belt Detail (no x Width)	Sheave Pitch (mm)	Rated Current (A)	Rated Torque (Nm)	Rated RPM	Frequency (Hz)	O/P Power (Kw)
STRIVE-III-1.00-544	544	1.00	100	3 X 30	65	7.0	95	382	38.2	3.8
STRIVE-III-1.00-680	680	1.00	100	3 X 30	65	9.5	120	382	38.2	4.8

Kindly contact us for various speed and load combination

STRIVE-IV

BELT DRIVEN MACHINE

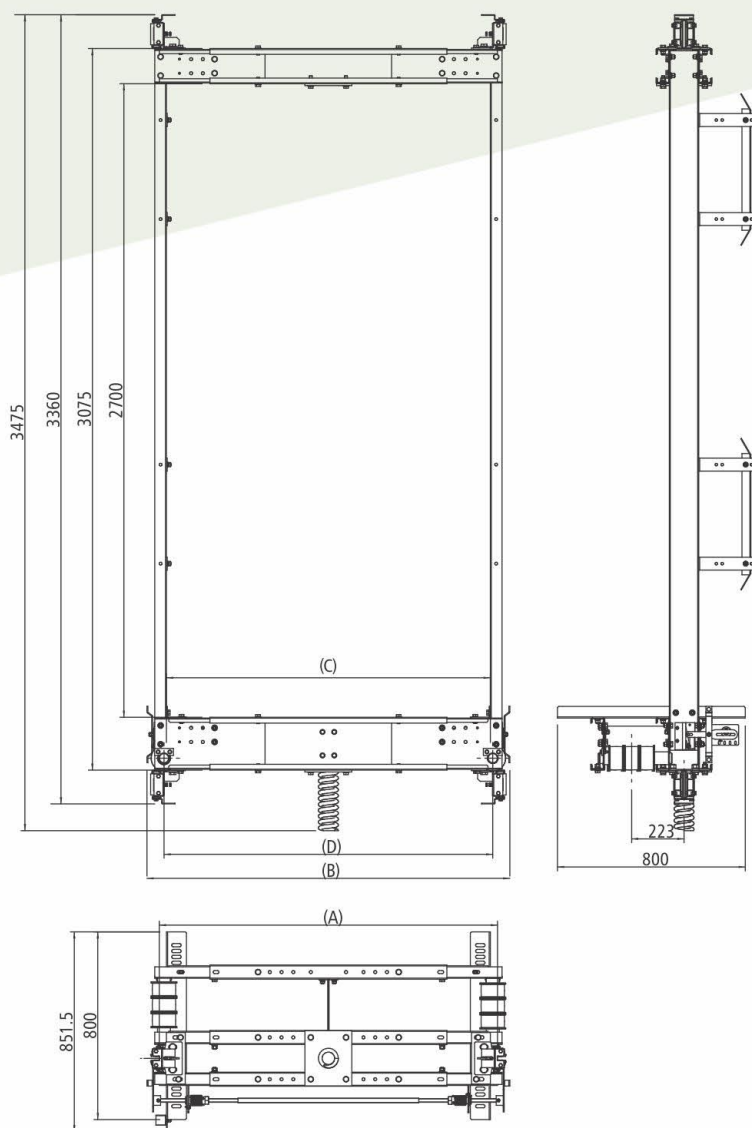
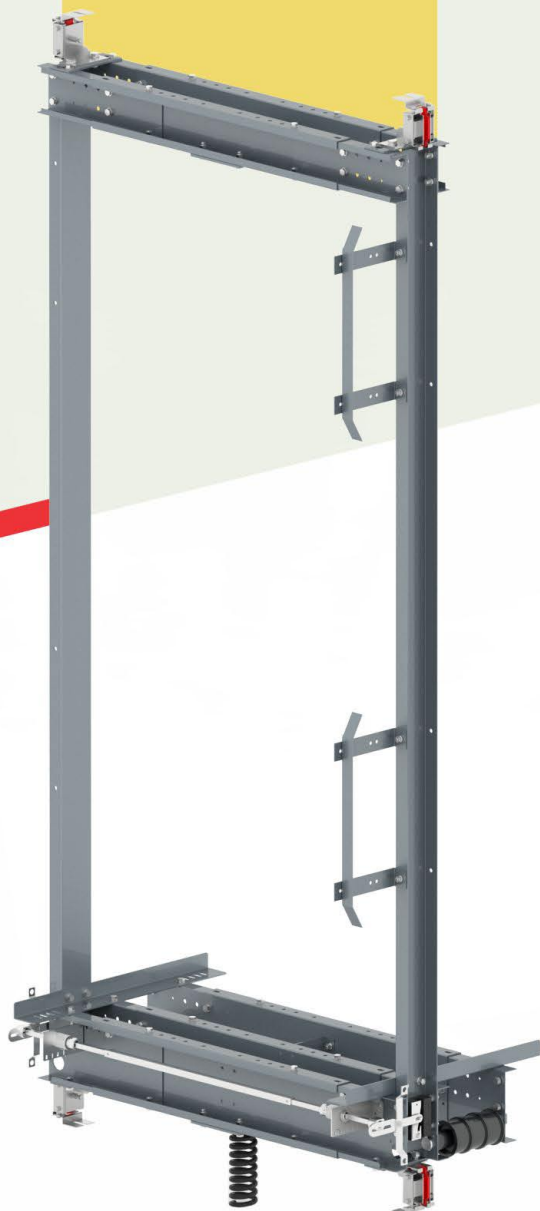
Max. Static Load (Kg)	2700
Duty Load (Kg)	1088
Roping	2:1
Sheve Diameter (mm)	100
Supply Voltage	400 V
Brake Voltage	110 VDC
Pole	12
Rating	S5-40%
Insulation	F Class
IP Code	IP 40
Weight of Machine (Kg)	142



• (All dimensions are in mm) • Subject to change without any prior notice!

Specification	Load (Kg)	Lift Speed (m/sec)	Sheave Dia (mm)	Belt Detail (no x Width)	Sheave Pitch (mm)	Rated Current (A)	Rated Torque (Nm)	Rated RPM	Frequency (Hz)	O/P Power (Kw)
STRIVE-IV-1.00-884	884	1.00	100	4 X 30	65	12.5	155	382	38.2	6.2
STRIVE-IV-1.00-1088	1088	1.00	100	4 X 30	65	17.0	190	382	38.2	7.5

CAR FRAME 2:1 BELT DRIVE (3 BELT) D.B.G - 1140 TO 1440 MM



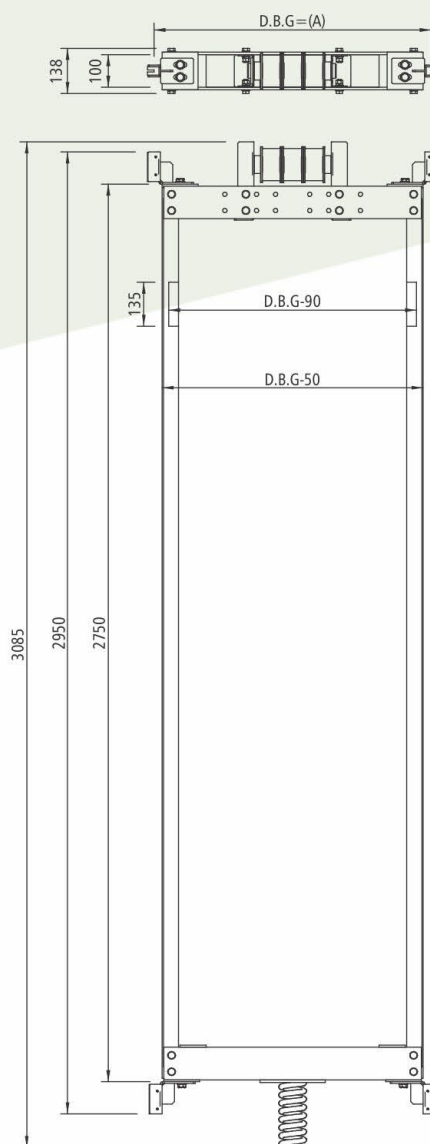
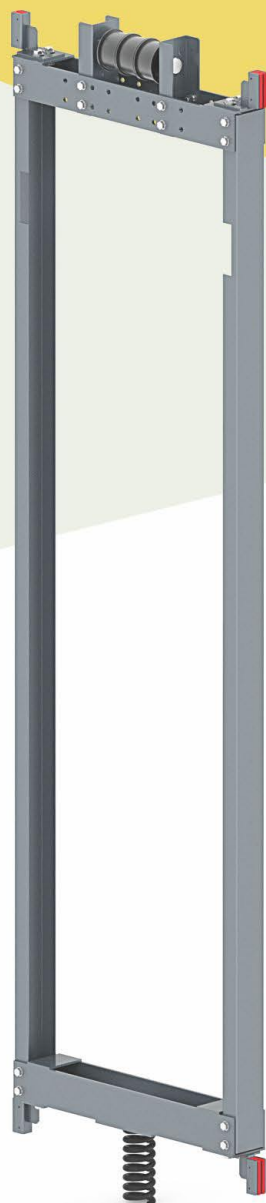
• (All dimensions are in mm) • Subject to change without any prior notice!

CAR FRAME DATA

A (mm)	1140	1190	1240	1290	1340	1390	1440
B (mm)	1250	1300	1350	1400	1450	1500	1550
C (mm)	1080	1130	1180	1230	1280	1330	1380
D (mm)	1100	1150	1200	1250	1300	1350	1400

D.B.G-DISTANCE BETWEEN GUIDE RAIL

COUNTER FRAME 2:1 BELT DRIVE (3 BELT) D.B.G - 800 / 850 / 900 MM



- (All dimensions are in mm)
- Subject to change without any prior notice!

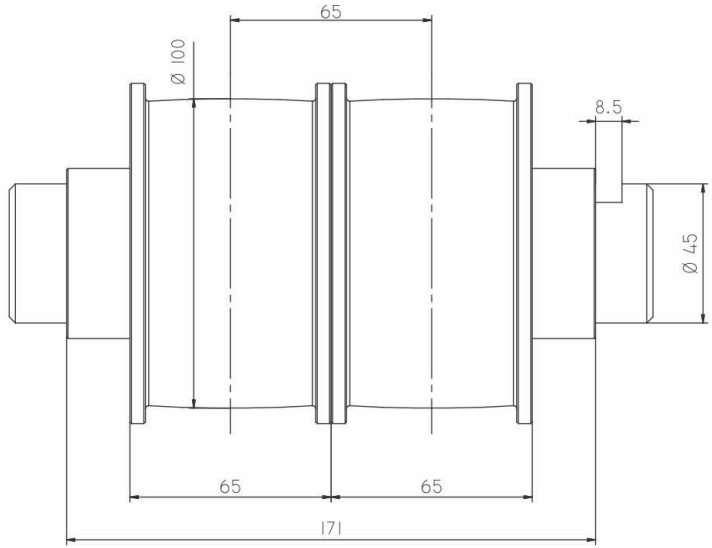
VARIOUS D.B.G

A	800 MM
A	850 MM
A	900 MM

D.B.G-DISTANCE BETWEEN GUIDE RAIL

STRIVE-II

BELT DIVERTER PULLEY

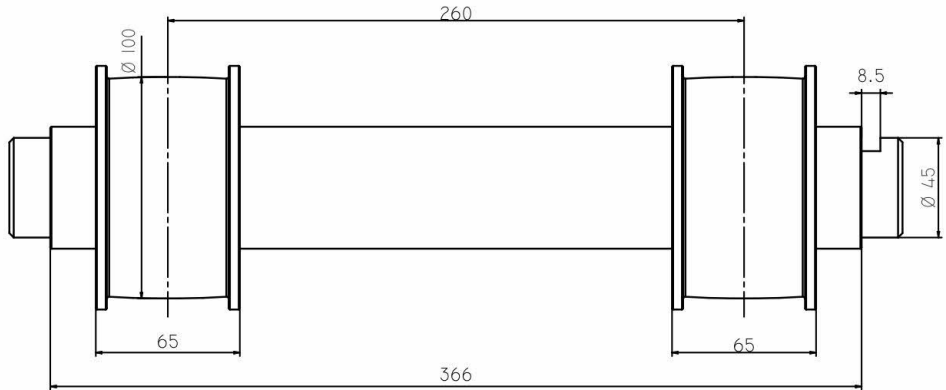


• (All dimensions are in mm) • Subject to change without any prior notice!



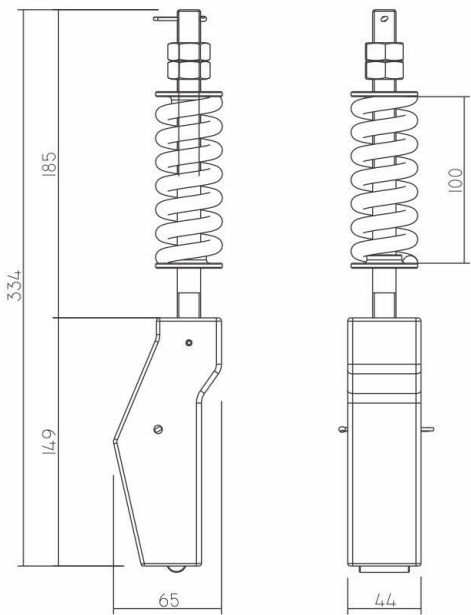
STRIVE-II D

BELT DIVERTER PULLEY



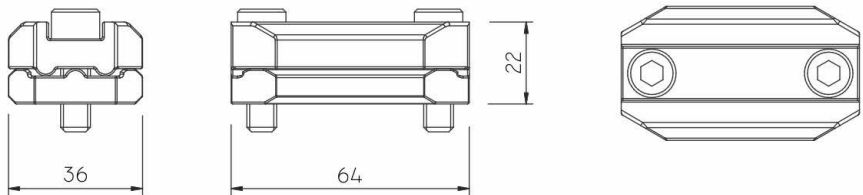
• (All dimensions are in mm) • Subject to change without any prior notice!

BELT THIMBLE



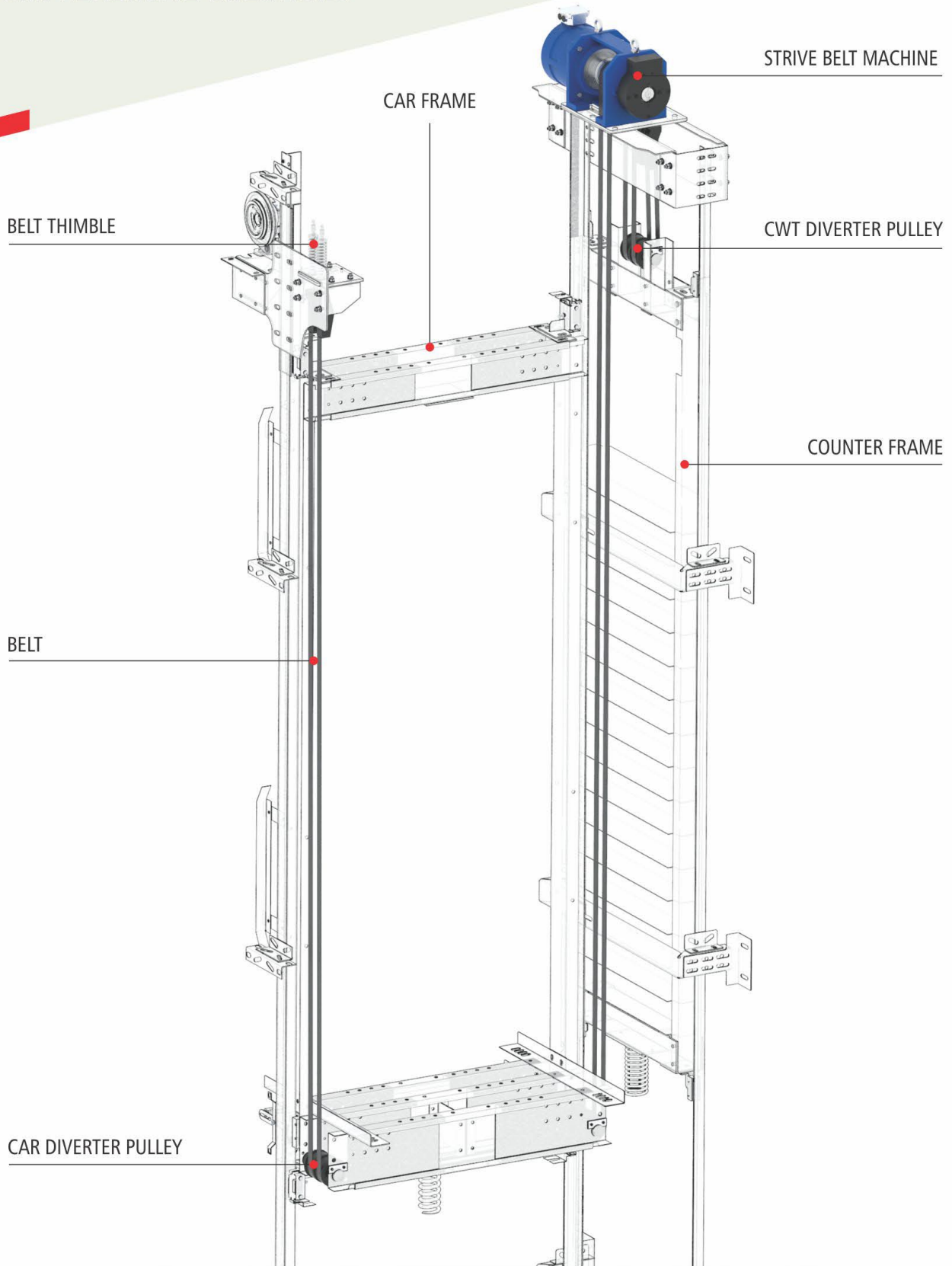
• (All dimensions are in mm) • Subject to change without any prior notice!

BELT CLIP



• (All dimensions are in mm) • Subject to change without any prior notice!

STRIVE
COMPREHENSIVE SOLUTIONS





25
Global
Presence
Countries



552, 'A' Road, Cross Road-12,
G.I.D.C. Kathwada, Ahmedabad - 382430.
Gujarat, India.

Phone : + 91 79 2290 1711, 12,14, 15.

Mobile : +91 97129 11912, 82670 08900

E-mail : info@sharpengineers.com
sales@sharpengineers.com

Website : www.sharpengineers.com



SCAN ME

Follow Us

