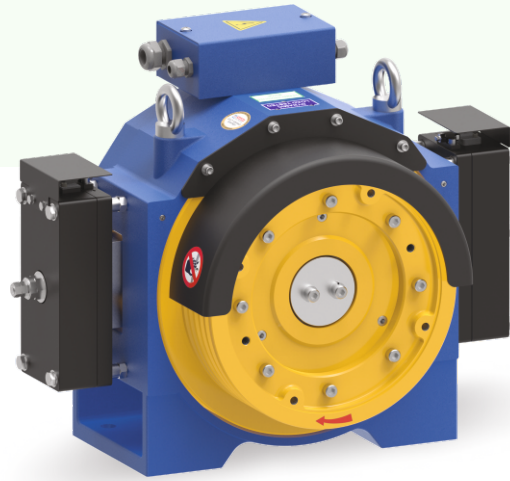


SEW SERIES

Gearless Traction Machine

SEW-10



Voltage
400 V



Suspension
2:1



Brake
110 VDC

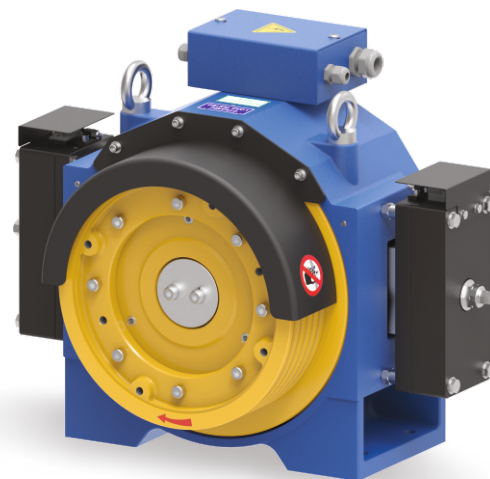


Max. Static Load
2000 Kg



Weight of Machine (kg)
250*

* Weight of machine is varies according to selection of sheave, Motor & Drive system.

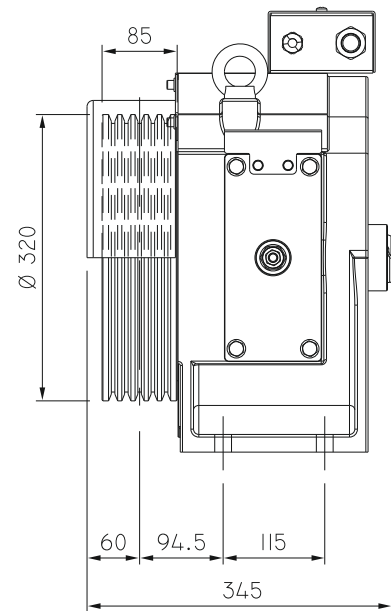
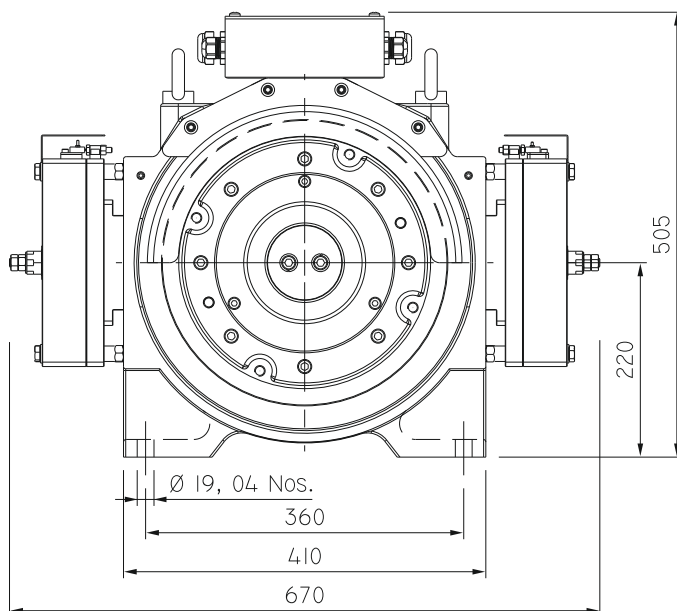


Gearless Traction Machine



Specification	Load (kg)	Lift Speed (m/s)	Height (m)	Sheave Dia (mm)	No. of Groove X Rope Dia	Current (A)	Toque (Nm)	Rated Speed (rpm)	Frequency (Hz)	Power (kW)	Pole	Rating	INS Class.	IP Code
SEW10-5P1A00	340	1.00	≤ 80	Ø320	4 X Ø8	7.5	200	119	23.8	2.5	24	S5 (40%)	F-Class	IP-40
SEW10-5P1A50		1.50			4 X Ø8	10.2	200	179	35.8	3.7				
SEW10-5P1A75		1.75			4 X Ø8	11.8	200	209	41.8	4.4				
SEW10-6P1A00	408	1.00	≤ 80	Ø320	4 X Ø8	8.4	230	119	23.8	3.0	24	S5 (40%)	F-Class	IP-40
SEW10-6P1A50		1.50			4 X Ø8	12.0	230	179	35.8	4.3				
SEW10-6P1A75		1.75			5 X Ø8	14.2	230	209	41.8	5.0				
SEW10-8P1A00	544	1.00	≤ 80	Ø320	4 X Ø8	11.2	305	119	23.8	3.8	24	S5 (40%)	F-Class	IP-40
SEW10-8P1A50		1.50			5 X Ø8	14.5	305	179	35.8	5.7				
SEW10-8P1A75		1.75			5 X Ø8	16.8	305	209	41.8	6.6				
SEW10-10P1A00	680	1.00	≤ 80	Ø320	5 X Ø8	14.0	380	119	23.8	4.7	24	S5 (40%)	F-Class	IP-40
SEW10-10P1A50		1.50			6 X Ø8	18.5	380	179	35.8	7.0				

Kindly contact us for various speed and load combination



(All dimensions are in mm)