



Voltage 400 V



Roping 2:1



Brake 110 VDC

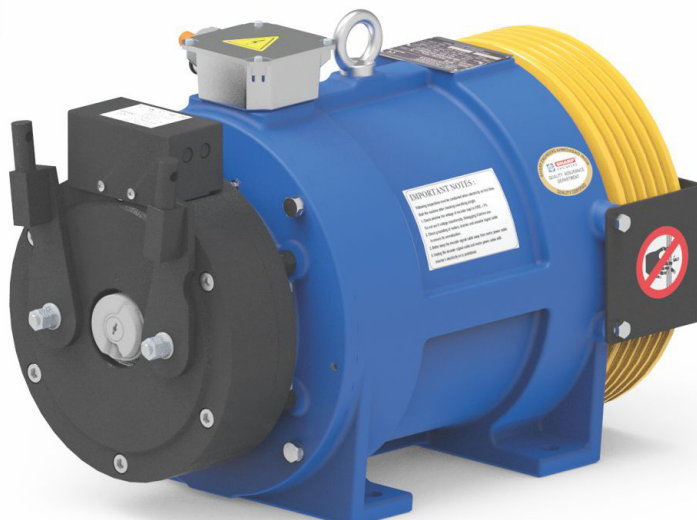


Max. Static Load 3400 Kg



Weight of Machine (kg) 167*

* Weight of machine is varies according to selection of sheave, Motor & Drive system.



Gearless Traction Machine

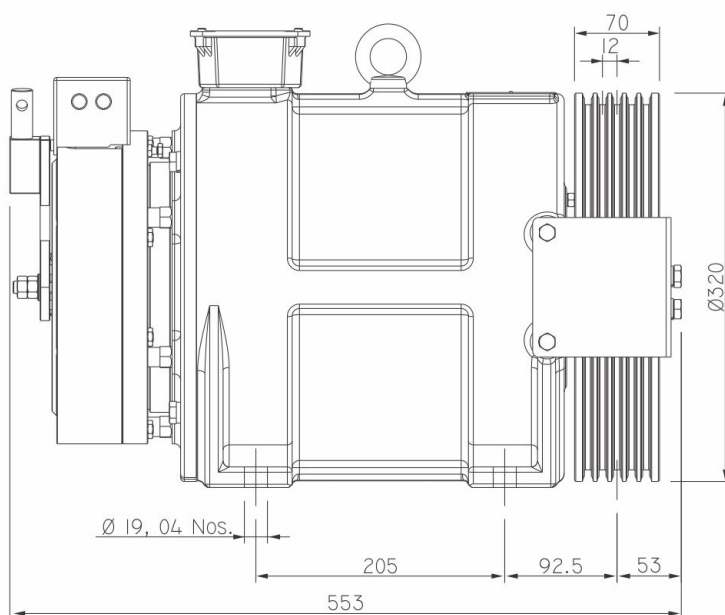
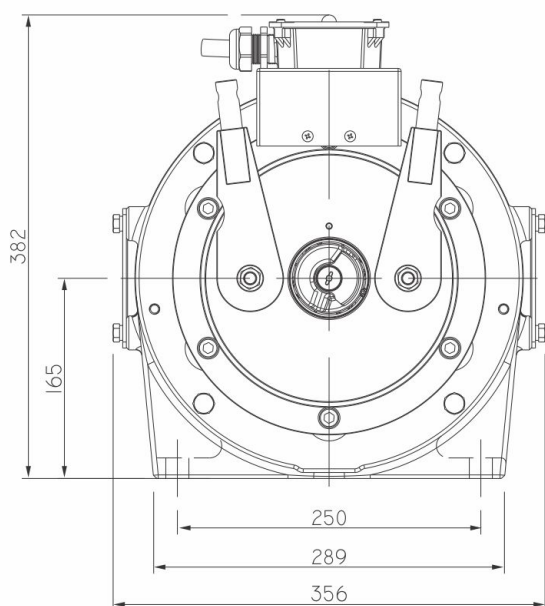


STERN¹⁰¹

Gearless Traction Machine

Specification	Load (kg)	Lift Speed (m/s)	Height (m)	Sheave Dia (mm)	No. of Groove X Rope Dia	Current (A)	Toque (Nm)	Rated Speed (rpm)	Frequency (Hz)	Power (kW)	Pole	Rating	INS Class.	IP Code
ST101-10P1A0	680	1.00	≤ 80	Ø320	5 X Ø8.0	12.0	380	119	19.9	4.7	20	S5 (40%)	F-Class	IP40

Kindly contact us for various speed and load combination



- (All dimensions are in mm)
- Subject to change without any prior notice!